

GRASP1 antibody

Catalog No: #22795



Orders: order@signalwayantibody.com
Support: tech@signalwayantibody.com

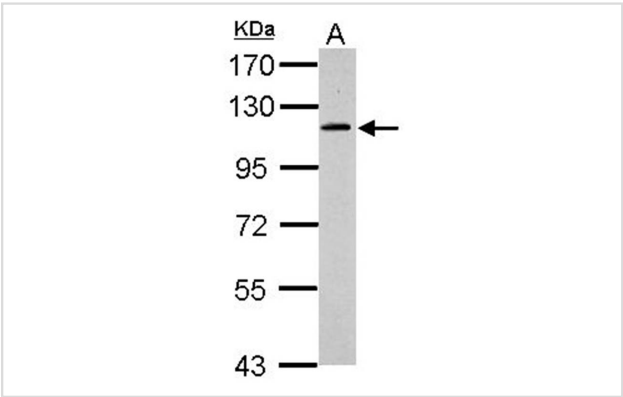
Description

Product Name	GRASP1 antibody
Host Species	Rabbit
Clonality	Polyclonal
Purification	Purified by antigen-affinity chromatography.
Applications	WB IF
Species Reactivity	Hu
Immunogen Type	Peptide
Immunogen Description	Synthetic peptide contain a sequence corresponding to a region within amino acids 311 and 371 of GRASP1
Target Name	GRASP1
Other Names	GRASP-1; KIAA1167; MGC126593; MGC126595; DKFZp434P0630
Accession No.	Swiss-Prot:Q4V328Gene ID:56850
Uniprot	Q4V328
GeneID	56850;
Concentration	0.7mg/ml
Formulation	Supplied in 0.1M Tris-buffered saline with 10% Glycerol (pH7.0). 0.01% Thimerosal was added as a preservative.
Storage	Store at -20°C for long term preservation (recommended). Store at 4°C for short term use.

Application Details

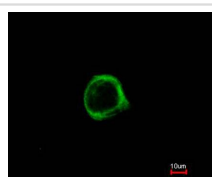
Predicted MW: 96kd
Western blotting: 1:100-1:1000
Immunofluorescence: 1:100-1:200

Images

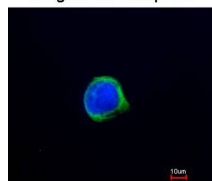


Sample (30 ug of whole cell lysate)
A: HepG2
7.5% SDS PAGE
Primary antibody diluted at 1: 500

Immunofluorescence analysis of paraformaldehyde-fixed HeLa, using GRASP1 antibody at 1: 200 dilution.



Merged with DNA probe



Background

GRASP1 is a neuron-specific guanine nucleotide exchange factor for the Ras family of small G proteins (RasGEF) and is associated with the GRIP/AMPA receptor complex in brain (Ye et al., 2000 [PubMed 10896157]).[supplied by OMIM]

Note: This product is for in vitro research use only