

PTRH2 Antibody

Catalog No: #42725

Orders: order@signalwayantibody.comSupport: tech@signalwayantibody.com

Description

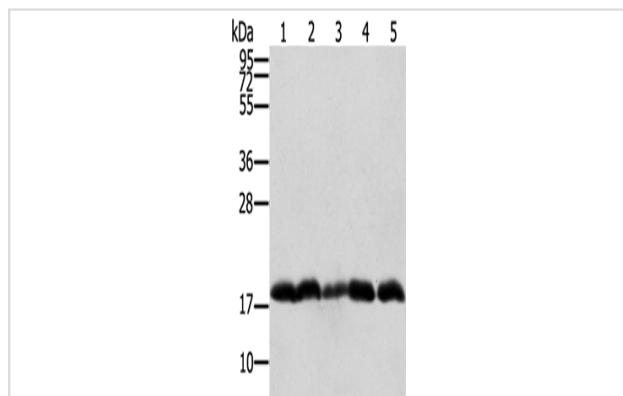
| | |
|-----------------------|---|
| Product Name | PTRH2 Antibody |
| Host Species | Rabbit |
| Clonality | Polyclonal |
| Purification | Antigen affinity purification. |
| Applications | WB IHC |
| Species Reactivity | Hu |
| Specificity | The antibody detects endogenous levels of total PTRH2 protein. |
| Immunogen Type | protein |
| Immunogen Description | Fusion protein of human PTRH2 |
| Target Name | PTRH2 |
| Other Names | BIT1; PTH2; CFAP37; CGI-147 |
| Accession No. | Swiss-Prot#: Q9Y3E5 Gene ID: 51651 |
| Uniprot | Q9Y3E5 |
| GeneID | 51651; |
| Calculated MW | 19kd |
| Concentration | 0.8mg/ml |
| Formulation | Rabbit IgG in pH7.4 PBS, 0.05% NaN ₃ , 40% Glycerol. |
| Storage | Store at -20°C |

Application Details

Western blotting: 1:1000-1:5000

Immunohistochemistry: 1:25-1:100

Images



Gel: 12%SDS-PAGE

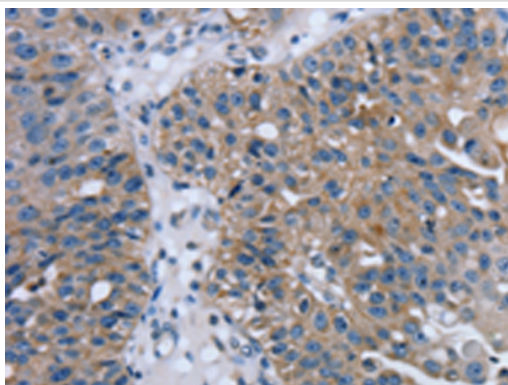
Lysate: 40 µg

Lane 1-5: Raji cells, Jurkat cells, 231 cells, hepg2 cells, K562 cells

Primary antibody: 1/250 dilution

Secondary antibody: Goat anti rabbit IgG at 1/8000 dilution

Exposure time: 20 seconds



Immunohistochemical analysis of paraffin-embedded Human breast cancer tissue using #42725 at dilution 1/20,

Background

PTRH2 (peptidyl-tRNA hydrolase 2), also known as BIT1 (Bcl-2 inhibitor of transcription 1), is a 179 amino acid mitochondrial protein. During apoptosis, PTRH2 is released from the mitochondria to the cytoplasm. Once in the cytoplasm, PTRH2 regulates the function of two transcriptional regulators, TLE5 and TLE1, thereby promoting caspase-independent cell death. It is also believed that the natural substrate for PTRH2 may be peptidyl-tRNAs, which leave the ribosomes during protein synthesis.?

Note: This product is for in vitro research use only