

RAD17 Antibody

Catalog No: #42728

Orders: order@signalwayantibody.comSupport: tech@signalwayantibody.com

Description

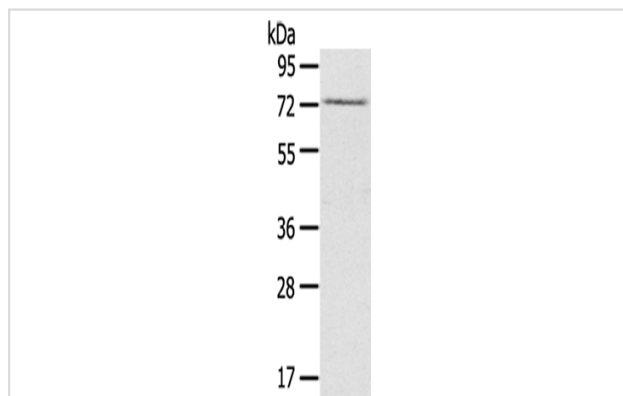
Product Name	RAD17 Antibody
Host Species	Rabbit
Clonality	Polyclonal
Purification	Antigen affinity purification.
Applications	WB
Species Reactivity	Hu
Specificity	The antibody detects endogenous levels of total RAD17 protein.
Immunogen Type	protein
Immunogen Description	Fusion protein of human RAD17
Target Name	RAD17
Other Names	CCYC; R24L; RAD24; HRAD17; RAD17SP
Accession No.	Swiss-Prot#: O75943Gene ID: 5884
Uniprot	O75943
GeneID	5884;
Calculated MW	77kd
Concentration	1.6mg/ml
Formulation	Rabbit IgG in pH7.4 PBS, 0.05% NaN ₃ , 40% Glycerol.
Storage	Store at -20°C

Application Details

Western blotting: 1:200-1:1000

Immunohistochemistry: 1:25-1:100

Images



Gel: 8%SDS-PAGE
Lysate: 40 µg
Lane: Lovo cells
Primary antibody: 1/200 dilution
Secondary antibody: Goat anti rabbit IgG at 1/8000 dilution
Exposure time: 1 minute

Background

The protein encoded by this gene is highly similar to the gene product of *Schizosaccharomyces pombe* rad17, a cell cycle checkpoint gene required

for cell cycle arrest and DNA damage repair in response to DNA damage. This protein shares strong similarity with DNA replication factor C (RFC), and can form a complex with RFCs. This protein binds to chromatin prior to DNA damage and is phosphorylated by the checkpoint kinase ATR following damage.

Note: This product is for in vitro research use only