

S100A11 antibody

Catalog No: #22797

Orders: order@signalwayantibody.comSupport: tech@signalwayantibody.com

Description

Product Name	S100A11 antibody
Host Species	Rabbit
Clonality	Polyclonal
Purification	Purified by antigen-affinity chromatography.
Applications	WB IHC IF
Species Reactivity	Hu
Immunogen Type	Peptide
Immunogen Description	Synthetic peptide contain a sequence corresponding to a region within amino acids 8 and 72 of S100A11
Target Name	S100A11
Accession No.	Swiss-Prot:P31949Gene ID:6282
Uniprot	P31949
GeneID	6282;
Concentration	1mg/ml
Formulation	Supplied in 0.1M Tris-buffered saline with 10% Glycerol (pH7.0). 0.01% Thimerosal was added as a preservative.
Storage	Store at -20°C for long term preservation (recommended). Store at 4°C for short term use.

Application Details

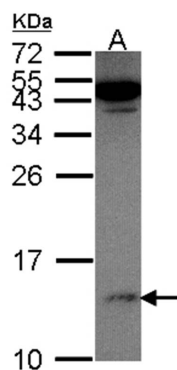
Predicted MW: 12kd

Western blotting: 1:500-1:3000

Immunohistochemistry: 1:50-1:500

Immunofluorescence: 1:100-1:200

Images

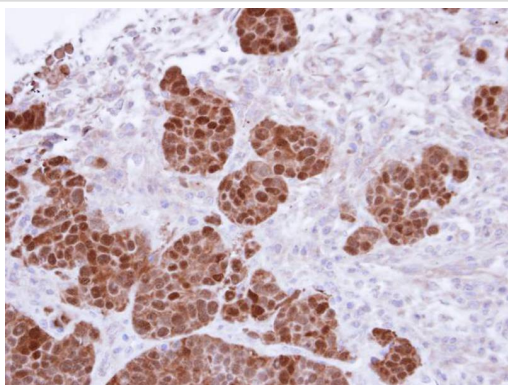


Sample (30 ug of whole cell lysate)

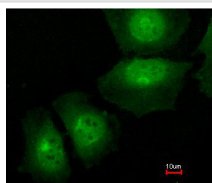
A: HeLa

15% SDS PAGE

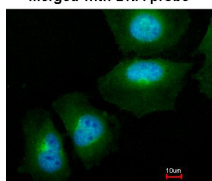
Primary antibody diluted at 1: 500



Immunohistochemical analysis of paraffin-embedded SW480 Xenograft, using S100A11 antibody at 1: 500 dilution.



Merged with DNA probe



Immunofluorescence analysis of paraformaldehyde-fixed HeLa, using S100A11 antibody at 1: 200 dilution.

Background

The protein encoded by this gene is a member of the S100 family of proteins containing 2 EF-hand calcium-binding motifs. S100 proteins are localized in the cytoplasm and/or nucleus of a wide range of cells, and involved in the regulation of a number of cellular processes such as cell cycle progression and differentiation. S100 genes include at least 13 members which are located as a cluster on chromosome 1q21. This protein may function in motility, invasion, and tubulin polymerization. Chromosomal rearrangements and altered expression of this gene have been implicated in tumor metastasis. [provided by RefSeq]

Note: This product is for in vitro research use only