

SLITRK4 Antibody

Catalog No: #42759

Orders: order@signalwayantibody.comSupport: tech@signalwayantibody.com

Description

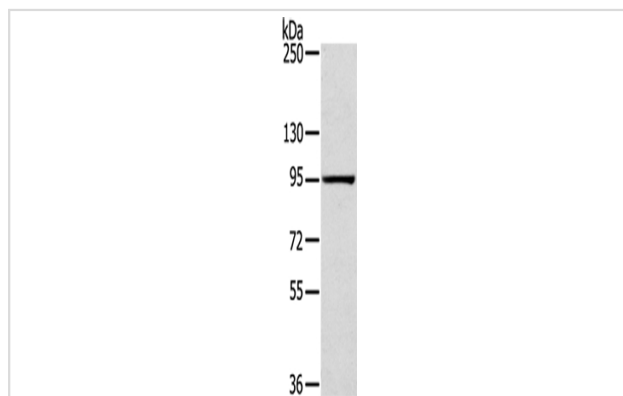
| | |
|-----------------------|-------------------------------------------------------------------------------------------------------------------|
| Product Name | SLITRK4 Antibody |
| Host Species | Rabbit |
| Clonality | Polyclonal |
| Purification | Antigen affinity purification. |
| Applications | WB IHC |
| Species Reactivity | Hu |
| Specificity | The antibody detects endogenous levels of total SLITRK4 protein. |
| Immunogen Type | protein |
| Immunogen Description | Fusion protein of human SLITRK4 |
| Target Name | SLITRK4 |
| Other Names | DKFZp547M2010; SLIK4; SLIT and NTRK-like family, member 4; SLIT and NTRK-like protein 4; slit and trk like gene 4 |
| Accession No. | Swiss-Prot#: Q8IW52Gene ID: 139065 |
| Uniprot | Q8IW52 |
| GeneID | 139065; |
| Calculated MW | 94kd |
| Concentration | 0.4mg/ml |
| Formulation | Rabbit IgG in pH7.4 PBS, 0.05% NaN ₃ , 40% Glycerol. |
| Storage | Store at -20°C |

Application Details

Western blotting: 1:200-1:1000

Immunohistochemistry: 1:30-1:150

Images



Gel: 6%SDS-PAGE

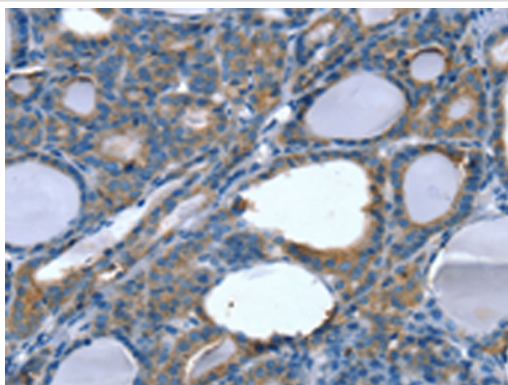
Lysate: 40 µg

Lane: PC3 cells

Primary antibody: 1/200 dilution

Secondary antibody: Goat anti rabbit IgG at 1/8000 dilution

Exposure time: 3 minutes



Immunohistochemical analysis of paraffin-embedded Human thyroid cancer tissue using #42759 at dilution 1/20,

Background

This gene encodes a transmembrane protein belonging to the the SLITRK family. These family members include two N-terminal leucine-rich repeat domains similar to those found in the axonal growth-controlling protein SLIT, as well as C-terminal regions similar to neurotrophin receptors. Studies of an homologous protein in mouse suggest that this family member functions to suppress neurite outgrowth. Alternative splicing results in multiple transcript variants.

Note: This product is for in vitro research use only