

Sec61 alpha-1 antibody

Catalog No: #22801



Orders: order@signalwayantibody.com
Support: tech@signalwayantibody.com

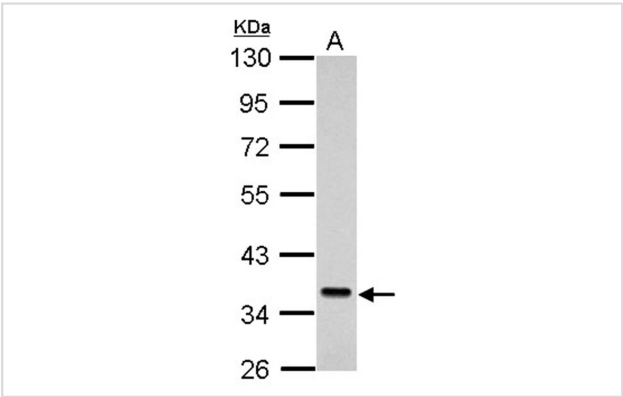
Description

Product Name	Sec61 alpha-1 antibody
Host Species	Rabbit
Clonality	Polyclonal
Purification	Purified by antigen-affinity chromatography.
Applications	WB IHC IF
Species Reactivity	Hu
Immunogen Type	Peptide
Immunogen Description	Synthetic peptide contain a sequence corresponding to a region within amino acids 413 and 476 of Sec61 alpha-1
Target Name	Sec61 alpha-1
Accession No.	Swiss-Prot:P61619Gene ID:29927
Uniprot	P61619
GeneID	29927;
Concentration	1mg/ml
Formulation	Supplied in 1XPBS, 10% Glycerol (pH7.0). 0.01% Thimerosal was added as a preservative.
Storage	Store at -20°C for long term preservation (recommended). Store at 4°C for short term use.

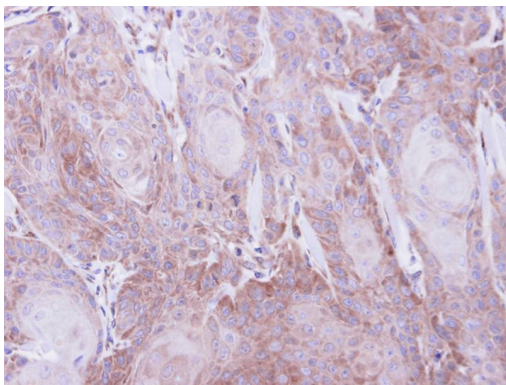
Application Details

Predicted MW: 52kd
Western blotting: 1:500-1:3000
Immunohistochemistry: 1:50-1:500
Immunofluorescence: 1:100-1:200

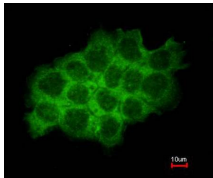
Images



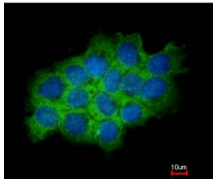
Sample (30 ug of whole cell lysate)
A: K562
10% SDS PAGE
Primary antibody diluted at 1: 1000



Immunohistochemical analysis of paraffin-embedded Cal27 xenograft, using SEC61A1 antibody at 1: 500 dilution.



Costained with Hoechst 33342



Immunofluorescence analysis of methanol-fixed A431, using SEC61A1 antibody at 1: 200 dilution.

Background

The protein encoded by this gene belongs to the SECY/SEC61- alpha family. It appears to play a crucial role in the insertion of secretory and membrane polypeptides into the endoplasmic reticulum. This protein found to be tightly associated with membrane-bound ribosomes, either directly or through adaptor proteins. This gene encodes an alpha subunit of the heteromeric SEC61 complex, which also contains beta and gamma subunits. [provided by RefSeq]

Note: This product is for in vitro research use only