

Her2/Neu Antibody

Catalog No: #P1002



Package Size: #P1002-1 0.1ml #P1002-2 1ml

Orders: order@signalwayantibody.com
Support: tech@signalwayantibody.com

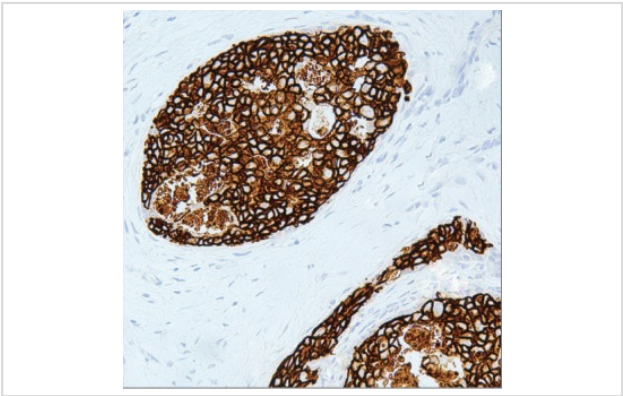
Description

Product Name	Her2/Neu Antibody
Host Species	Mouse
Clonality	Monoclonal
Clone No.	IHC042
Applications	IHC
Species Reactivity	Human
Formulation	Tris Buffer, pH 7.3 - 7.7, with 1% BSA and
Storage	Store at 2-8C. Do not freeze.

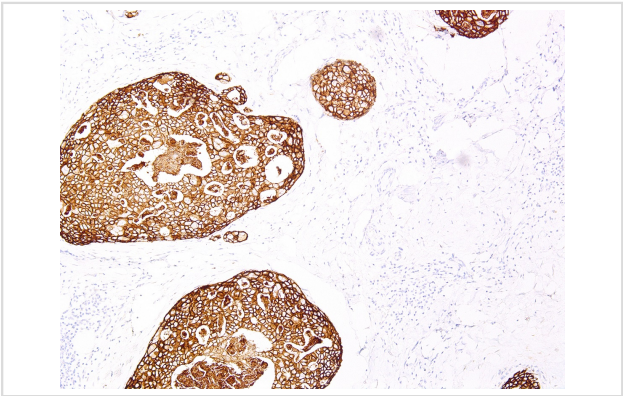
Application Details

Recommended working dilution range:1:100 - 1:200

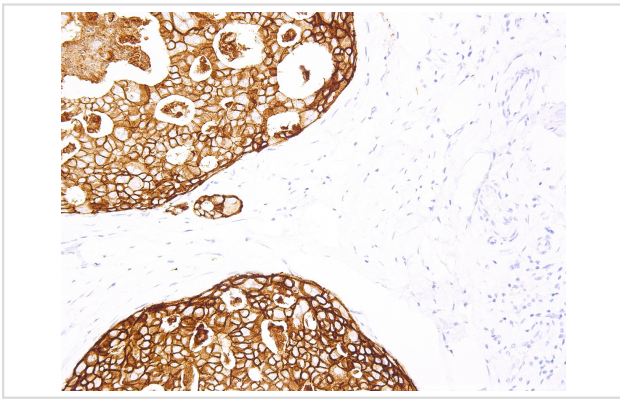
Images



Her2/Neu Antibody (P1002) on Breast carcinoma



Her2/Neu Antibody (P1002) on Breast - 10X



Her2/Neu Antibody (P1002) on Breast - 40X

Product Description

The Her2/Neu (c-erbB-2) proto-oncogene is a transmembrane receptor tyrosine kinase that is clinically indicated in a number of carcinomas. Overexpression of the c-erbB-2 protein has been associated with ductal breast cancer, as well as pulmonary and gastric adenocarcinomas. A correlation between Her2 and p53 has also been documented, as overexpression of both proteins has been associated with early invasion and metastasis in bladder cancer.

References

Suthipintawong C, et al. Diagn Cytopathol. 1997; 17:127-33. Alexiev BA, et al. Gen Diagn Pathol. 1997; 142:271-9. Fernandez Ace?ero MJ, et al. Gen Diagn Pathol. 1997; 142:289-96. Koeppen HKW, et al. Histopathology. 2001; 38:96-104. Moch H, et al. Virchows Arch A Pathol Anat Histopathol. 1993; 423:329-34. Cetin B, et al. Transl Gastroenterol Hepatol. 2016; 1:59.

Note: This product is for in vitro research use only