

MSH2 Antibody

Catalog No: #P1030

Package Size: #P1030-1 0.1ml #P1030-2 1ml

Orders: order@signalwayantibody.comSupport: tech@signalwayantibody.com

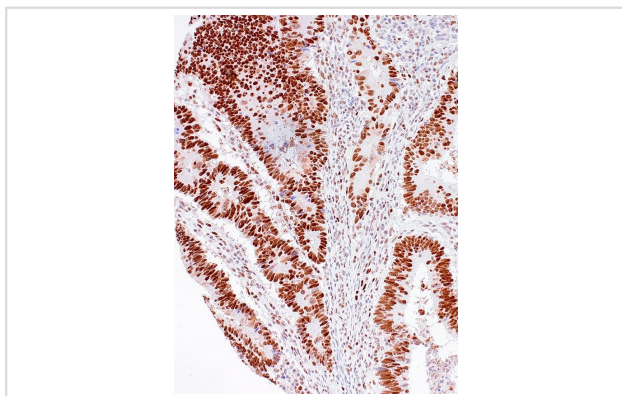
Description

Product Name	MSH2 Antibody
Host Species	Mouse
Clonality	Monoclonal
Clone No.	IHC510
Isotype	IgG1, kappa
Applications	IHC
Species Reactivity	Human
Uniprot	P43246
Formulation	Tris Buffer, pH 7.3 - 7.7, with 1% BSA and
Storage	Store at 2-8C. Do not freeze.

Application Details

Recommended working dilution range: 1:100 - 1:200

Images



MSH2 (IHC510) on Colon cancer
POSITIVE CONTROL: Colon Carcinoma

Product Description

MutS Homolog 2 (MSH2) is a protein involved in the mismatch-repair pathway. This protein is commonly associated with hereditary non-polyposis colorectal cancer, and mutations in this gene are correlated with the development of sporadic colorectal carcinoma. Expression levels of MSH2 are abnormally low in a high percentage of patients with microsatellite instability, as well as endometrial and ovarian cancers. Use of Anti-MSH2 is optimized when paired in an IHC panel with antibodies against MSH6, MLH1, and PMS2. Reports have shown Anti-MSH2 to be useful in the detection of the protein in a number of normal and neoplastic tissues, and for identifying a loss of MSH2 in tumors that are microsatellite-unstable.

References

Pal T, et al. Cancer. 2008; 113:733-42. Brueckl WM, et al. Anticancer Res. 2003; 23:1773-8. Rigau V, et al. Arch Pathol Lab Med. 2003; 127:694-700. Renkonen E, et al. J Clin Oncol. 2003; 21:3629-37. Hoedema R, et al. Am Surg. 2003; 69:387-92. Christensen M, et al. Cancer. 2002; 95:2422-30.

Note: This product is for in vitro research use only