

## WDR19 Antibody

Catalog No: #42851

Orders: [order@signalwayantibody.com](mailto:order@signalwayantibody.com)Support: [tech@signalwayantibody.com](mailto:tech@signalwayantibody.com)

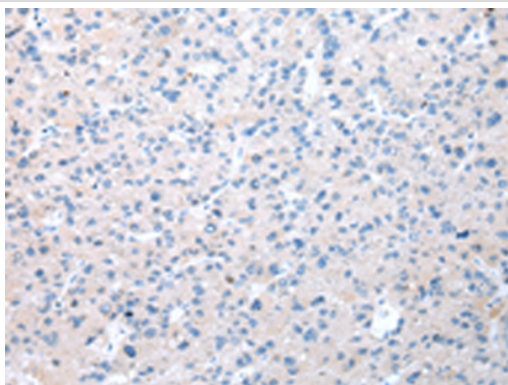
## Description

Product Name	WDR19 Antibody
Host Species	Rabbit
Clonality	Polyclonal
Purification	Antigen affinity purification.
Applications	IHC
Species Reactivity	Hu
Specificity	The antibody detects endogenous levels of total WDR19 protein.
Immunogen Type	protein
Immunogen Description	Fusion protein of human WDR19
Target Name	WDR19
Other Names	ATD5; CED4; DYF-2; ORF26; Oseg6; PWDMP; SRTD5; IFT144; NPHP13
Accession No.	Swiss-Prot#: Q8NEZ3Gene ID: 57728
Uniprot	Q8NEZ3
GeneID	57728;
Concentration	1.1mg/ml
Formulation	Rabbit IgG in pH7.4 PBS, 0.05% NaN <sub>3</sub> , 40% Glycerol.
Storage	Store at -20°C

## Application Details

Immunohistochemistry: 1:25-1:100

## Images



Immunohistochemical analysis of paraffin-embedded Human liver cancer tissue using #42851 at dilution 1/20,

## Background

This gene encodes a member of the WD repeat protein family. WD repeats are minimally conserved regions of approximately 40 amino acids typically bracketed by gly-his and trp-aspartic acid (GH-WD), which may facilitate formation of heterotrimeric or multiprotein complexes. Members of this family are involved in a variety of cellular processes, including cell cycle progression, signal transduction, apoptosis, and gene regulation. This protein contains six WD repeats, a clathrin heavy-chain repeat, and three transmembrane domains. This gene is conserved from *C. elegans* to human. It may

participate in androgen-regulated signaling mechanisms or in the vesicular trafficking of androgen-regulated secretory processes. Alternatively spliced transcript variants encoding distinct isoforms have been reported but the full-length nature of one of these variants has not been defined.

---

Note: This product is for in vitro research use only