

## WIF1 Antibody

Catalog No: #42858

Orders: [order@signalwayantibody.com](mailto:order@signalwayantibody.com)Support: [tech@signalwayantibody.com](mailto:tech@signalwayantibody.com)

## Description

Product Name	WIF1 Antibody
Host Species	Rabbit
Clonality	Polyclonal
Purification	Antigen affinity purification.
Applications	WB IHC
Species Reactivity	Hu Ms
Specificity	The antibody detects endogenous levels of total WIF1 protein.
Immunogen Description	Fusion protein of human WIF1
Target Name	WIF1
Other Names	WIF-1
Accession No.	Swiss-Prot#: Q9Y5W5?Gene ID: 11197
Uniprot	Q9Y5W5
GeneID	11197;
Calculated MW	42kd
Concentration	1.1mg/ml
Formulation	Rabbit IgG in pH7.4 PBS, 0.05% NaN <sub>3</sub> , 40% Glycerol.
Storage	Store at -20°C

## Application Details

Western blotting: 1:200-1:1000

Immunohistochemistry: 1:100-1:200

## Images



Gel: 8%SDS-PAGE

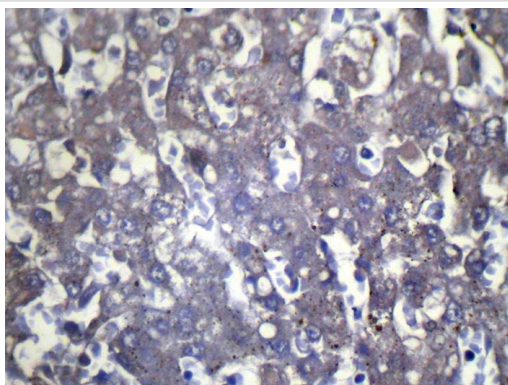
Lysate: 40 µg

Lane: Mouse trachea tissue

Primary antibody: 1/300 dilution

Secondary antibody: Goat anti rabbit IgG at 1/8000 dilution

Exposure time: 10 seconds



Immunohistochemical analysis of paraffin-embedded Human Liver cancer tissue using #42858 at dilution 1/100.

## Background

The protein encoded by this gene functions to inhibit WNT proteins, which are extracellular signaling molecules that play a role in embryonic development. This protein contains a WNT inhibitory factor (WIF) domain and five epidermal growth factor (EGF)-like domains, and is thought to be involved in mesoderm segmentation. This gene functions as a tumor suppressor gene, and has been found to be epigenetically silenced in various cancers.?

Note: This product is for in vitro research use only