

MRPS18C Antibody

Catalog No: #42908



Orders: order@signalwayantibody.com
Support: tech@signalwayantibody.com

Description

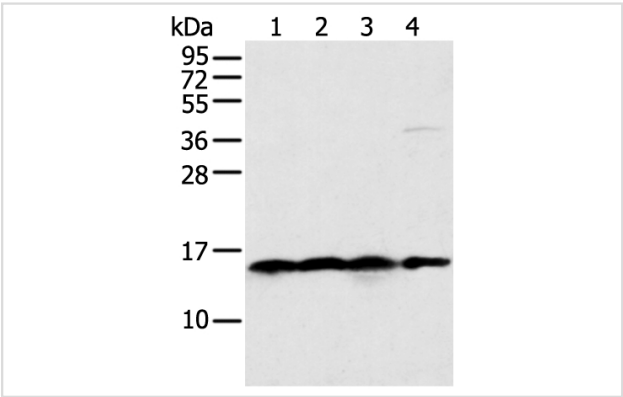
Product Name	MRPS18C Antibody
Host Species	Rabbit
Clonality	Polyclonal
Purification	Antigen affinity purification.
Applications	WB IHC
Species Reactivity	Hu
Specificity	The antibody detects endogenous levels of total MRPS18C protein.
Immunogen Type	protein
Immunogen Description	Full length fusion protein of human MRPS18C
Target Name	MRPS18C
Other Names	CGI-134; S18mt-c; MRPS18-1; mrps18-c; MRP-S18-1; MRP-S18-c
Accession No.	Swiss-Prot#: Q9Y3D5Gene ID: 51023
Uniprot	Q9Y3D5
GeneID	51023;
Calculated MW	16kd
Concentration	0.8mg/ml
Formulation	Rabbit IgG in pH7.4 PBS, 0.05% NaN3, 40% Glycerol.
Storage	Store at -20°C

Application Details

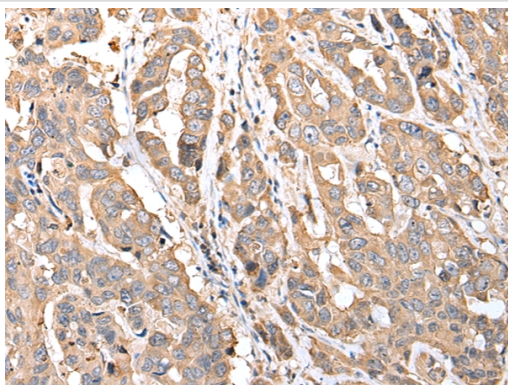
Western blotting: 1:500-1:2000

Immunohistochemistry: 1:25-1:100

Images



Gel: 12%SDS-PAGE
Lysate: 40 µg
Lane 1-4: 231BEB~HelaBEB~K562 cell and Human bladder carcinoma tissue
Primary antibody: 1/400 dilution
Secondary antibody: Goat anti rabbit IgG at 1/8000 dilution
Exposure time: 5 seconds



Immunohistochemical analysis of paraffin-embedded Human breast cancer tissue using #42908 at dilution 1/20,

Background

Mammalian mitochondrial ribosomal proteins are encoded by nuclear genes and help in protein synthesis within the mitochondrion. Mitochondrial ribosomes (mitoribosomes) consist of a small 28S subunit and a large 39S subunit. They have an estimated 75% protein to rRNA composition compared to prokaryotic ribosomes, where this ratio is reversed. Another difference between mammalian mitoribosomes and prokaryotic ribosomes is that the latter contain a 5S rRNA. Among different species, the proteins comprising the mitoribosome differ greatly in sequence, and sometimes in biochemical properties, which prevents easy recognition by sequence homology.

Note: This product is for in vitro research use only