

RPS15 Antibody

Catalog No: #42938

Orders: order@signalwayantibody.comSupport: tech@signalwayantibody.com

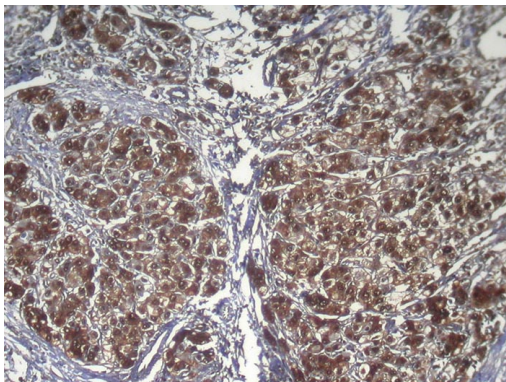
Description

| | |
|-----------------------|---|
| Product Name | RPS15 Antibody |
| Host Species | Rabbit |
| Clonality | Polyclonal |
| Purification | Antigen affinity purification. |
| Applications | IHC |
| Species Reactivity | Hu Ms Rt |
| Specificity | The antibody detects endogenous levels of total RPS15 protein. |
| Immunogen Description | Full length fusion protein of human RPS15 |
| Target Name | RPS15 |
| Other Names | RIG; S15 |
| Accession No. | Swiss-Prot#: P62841Gene ID: 6209 |
| Uniprot | P62841 |
| GeneID | 6209; |
| Concentration | 1.2mg/ml |
| Formulation | Rabbit IgG in pH7.4 PBS, 0.05% NaN ₃ , 40% Glycerol. |
| Storage | Store at -20°C |

Application Details

Immunohistochemistry: 1:100-1:200

Images



Immunohistochemical analysis of paraffin-embedded Human Liver cancer tissue using #42938 at dilution 1/100,

Background

Ribosomes, the organelles that catalyze protein synthesis, consist of a small 40S subunit and a large 60S subunit. Together these subunits are composed of 4 RNA species and approximately 80 structurally distinct proteins. This gene encodes a ribosomal protein that is a component of the 40S subunit. The protein belongs to the S19P family of ribosomal proteins. It is located in the cytoplasm. This gene has been found to be activated in various tumors, such as insulinomas, esophageal cancers, and colon cancers. As is typical for genes encoding ribosomal proteins, there are multiple processed pseudogenes of this gene dispersed through the genome. Alternative splicing results in multiple transcript variants.

Note: This product is for in vitro research use only