

## KHDRBS3 Antibody

Catalog No: #42967

Orders: [order@signalwayantibody.com](mailto:order@signalwayantibody.com)Support: [tech@signalwayantibody.com](mailto:tech@signalwayantibody.com)

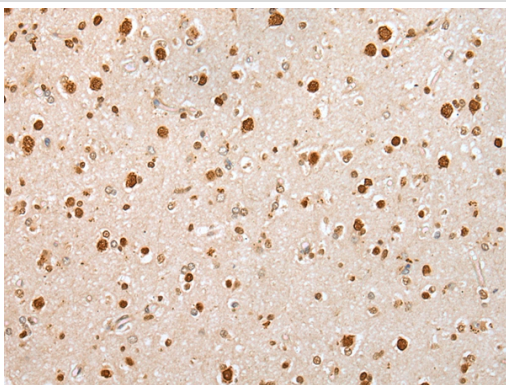
## Description

Product Name	KHDRBS3 Antibody
Host Species	Rabbit
Clonality	Polyclonal
Purification	Antigen affinity purification.
Applications	IHC
Species Reactivity	Hu
Specificity	The antibody detects endogenous levels of total KHDRBS3 protein.
Immunogen Type	protein
Immunogen Description	Full length fusion protein of human KHDRBS3
Target Name	KHDRBS3
Other Names	Etle; SALP; SLM2; SLM-2; TSTAR; T-STAR; etoile
Accession No.	Swiss-Prot#: O75525Gene ID: 10656
Uniprot	O75525
GeneID	10656;
Concentration	0.8mg/ml
Formulation	Rabbit IgG in pH7.4 PBS, 0.05% NaN <sub>3</sub> , 40% Glycerol.
Storage	Store at -20°C

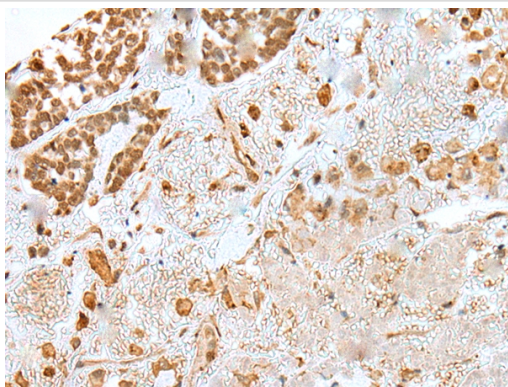
## Application Details

Immunohistochemistry: 1:25-1:100

## Images



Immunohistochemical analysis of paraffin-embedded Human brain tissue using #42967 at dilution 1/25.



Immunohistochemical analysis of paraffin-embedded Human esophagus cancer tissue using #42967 at dilution 1/25.

## Background

RNA-binding protein that plays a role in the regulation of alternative splicing and influences mRNA splice site selection and exon inclusion. May play a role as a negative regulator of cell growth. Inhibits cell proliferation. Involved in splice site selection of vascular endothelial growth factor. Induces an increased concentration-dependent incorporation of exon in CD44 pre-mRNA by direct binding to purine-rich exonic enhancer. RNA-binding abilities are down-regulated by tyrosine kinase PTK6. Involved in post-transcriptional regulation of HIV-1 gene expression. Binds preferentially to the 5'-[AU]UAAA-3' motif in vitro.

Note: This product is for in vitro research use only