

TWSG1 Antibody

Catalog No: #42983

Orders: order@signalwayantibody.comSupport: tech@signalwayantibody.com

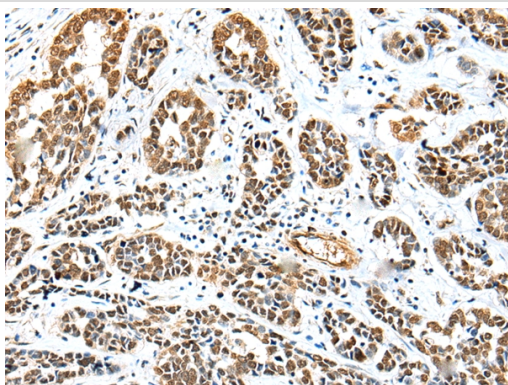
Description

Product Name	TWSG1 Antibody
Host Species	Rabbit
Clonality	Polyclonal
Purification	Antigen affinity purification.
Applications	IHC
Species Reactivity	Hu
Specificity	The antibody detects endogenous levels of total TWSG1 protein.
Immunogen Type	protein
Immunogen Description	Fusion protein of human TWSG1
Target Name	TWSG1
Other Names	TSG
Accession No.	Swiss-Prot#: Q9GZX9Gene ID: 57045
Uniprot	Q9GZX9
GeneID	57045;
Concentration	0.4mg/ml
Formulation	Rabbit IgG in pH7.4 PBS, 0.05% NaN ₃ , 40% Glycerol.
Storage	Store at -20°C

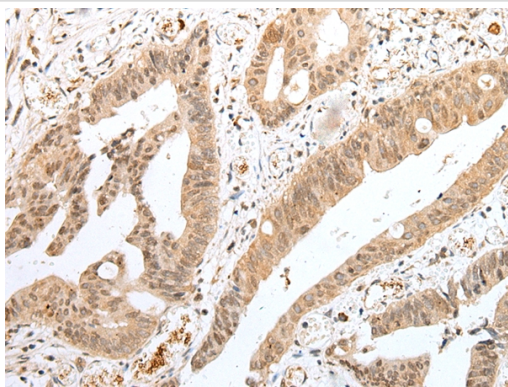
Application Details

Immunohistochemistry: 1:25-1:100

Images



Immunohistochemical analysis of paraffin-embedded Human esophagus cancer tissue using #42983 at dilution 1/25.



Immunohistochemical analysis of paraffin-embedded Human colorectal cancer tissue using #42983 at dilution 1/25.

Background

May be involved in dorsoventral axis formation. Seems to antagonize BMP signaling by forming ternary complexes with CHRD and BMPs, thereby preventing BMPs from binding to their receptors. In addition to the anti-BMP function, also has pro-BMP activity, partly mediated by cleavage and degradation of CHRD, which releases BMPs from ternary complexes. May be an important modulator of BMP-regulated cartilage development and chondrocyte differentiation. May play a role in thymocyte development (By similarity).

Note: This product is for in vitro research use only