

## Apelin receptor antibody

Catalog No: #22822

Orders: [order@signalwayantibody.com](mailto:order@signalwayantibody.com)Support: [tech@signalwayantibody.com](mailto:tech@signalwayantibody.com)

## Description

Product Name	Apelin receptor antibody
Host Species	Rabbit
Clonality	Polyclonal
Purification	Purified by antigen-affinity chromatography.
Applications	WB IHC
Species Reactivity	Hu
Immunogen Type	Peptide
Immunogen Description	Synthetic peptide contain a sequence corresponding to a region within amino acids 2 and 66 of Apelin receptor
Target Name	Apelin receptor
Accession No.	Swiss-Prot:P35414Gene ID:187
Uniprot	P35414
GeneID	187;
Concentration	1mg/ml
Formulation	Supplied in 1XPBS, 1%BSA, 20% Glycerol (pH7.0). 0.01% Thimerosal was added as a preservative.
Storage	Store at -20°C for long term preservation (recommended). Store at 4°C for short term use.

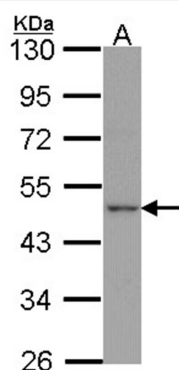
## Application Details

Predicted MW: 43kd

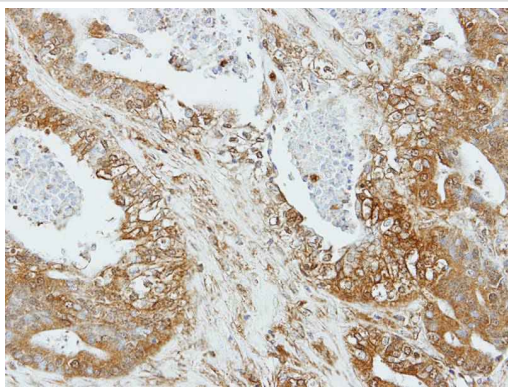
Western blotting: 1:500-1:3000

Immunohistochemistry: 1:100-1:250

## Images



Sample (30 ug of whole cell lysate)  
A: H1299  
10% SDS PAGE  
Apelin receptor antibody diluted at 1: 1000



Immunohistochemical analysis of paraffin-embedded OVCA xenograft, using Apelin Receptor antibody at 1: 100 dilution.

## Background

There are at least two distinct receptor subtypes of angiotensin II: angiotensin II receptor, type 1 (AGTR1) and angiotensin II receptor, type 2 (AGTR2). Most of the effects of angiotensin II are mediated by the AGTR1 receptor. This gene is related to the AGTR1 gene by sequence similarity. It was cloned based on a conserved transmembrane domain found in members of the G protein-coupled receptor (GPCR) gene family. [provided by RefSeq]

Note: This product is for in vitro research use only