

SFN Antibody

Catalog No: #43001

Orders: order@signalwayantibody.comSupport: tech@signalwayantibody.com

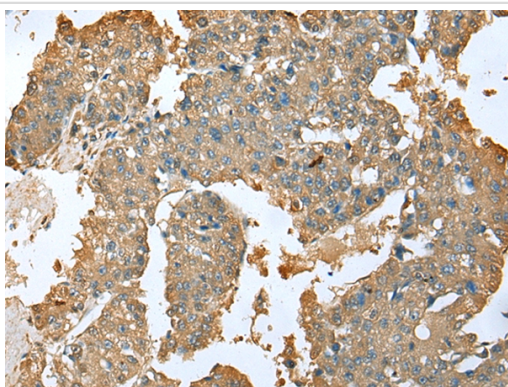
Description

Product Name	SFN Antibody
Host Species	Rabbit
Clonality	Polyclonal
Purification	Antigen affinity purification.
Applications	IHC
Species Reactivity	Hu
Specificity	The antibody detects endogenous levels of total SFN protein.
Immunogen Type	protein
Immunogen Description	Full length fusion protein of human SFN
Target Name	SFN
Other Names	YWHAS
Accession No.	Swiss-Prot#: P31947Gene ID: 2810
Uniprot	P31947
GeneID	2810;
Concentration	0.9mg/ml
Formulation	Rabbit IgG in pH7.4 PBS, 0.05% NaN ₃ , 40% Glycerol.
Storage	Store at -20°C

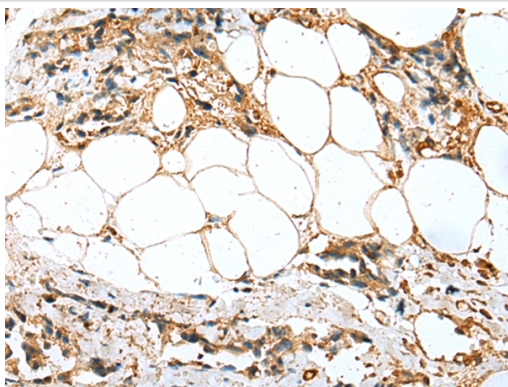
Application Details

Immunohistochemistry: 1:10-1:50

Images



Immunohistochemical analysis of paraffin-embedded Human liver cancer tissue using #43001 at dilution 1/25.



Immunohistochemical analysis of paraffin-embedded Human breast cancer tissue using #43001 at dilution 1/25.

Background

Adapter protein implicated in the regulation of a large spectrum of both general and specialized signaling pathways. Binds to a large number of partners, usually by recognition of a phosphoserine or phosphothreonine motif. Binding generally results in the modulation of the activity of the binding partner. When bound to KRT17, regulates protein synthesis and epithelial cell growth by stimulating Akt/mTOR pathway. May also regulate MDM2 autoubiquitination and degradation and thereby activate p53/TP53.

Note: This product is for in vitro research use only