

CASK Antibody

Catalog No: #43019

Orders: order@signalwayantibody.comSupport: tech@signalwayantibody.com

Description

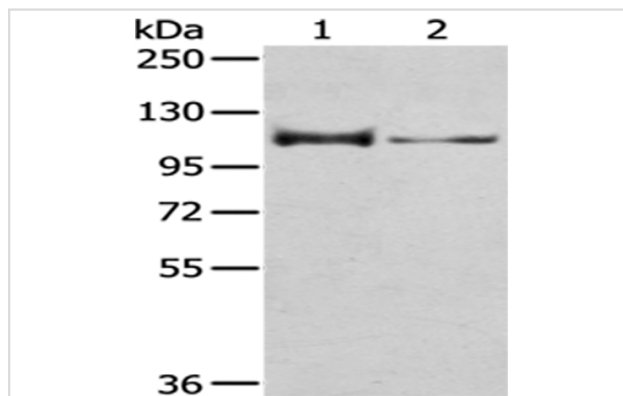
| | |
|-----------------------|---|
| Product Name | CASK Antibody |
| Host Species | Rabbit |
| Clonality | Polyclonal |
| Purification | Antigen affinity purification. |
| Applications | WB IHC |
| Species Reactivity | Hu Ms |
| Specificity | The antibody detects endogenous levels of total CASK protein. |
| Immunogen Type | protein |
| Immunogen Description | Fusion protein of human CASK |
| Target Name | CASK |
| Other Names | CMG; FGS4; LIN2; TNRC8; CAGH39; CAMGUK; MICPCH; MRXSNA |
| Accession No. | Swiss-Prot#: O14936 Gene ID: 8573 |
| Uniprot | O14936 |
| GeneID | 8573; |
| Calculated MW | 105kd |
| Concentration | 1mg/ml |
| Formulation | Rabbit IgG in pH7.4 PBS, 0.05% NaN ₃ , 40% Glycerol. |
| Storage | Store at -20°C |

Application Details

Western blotting: 1:500-1:2000

Immunohistochemistry: 1:25-1:100

Images



Gel: 6%SDS-PAGE

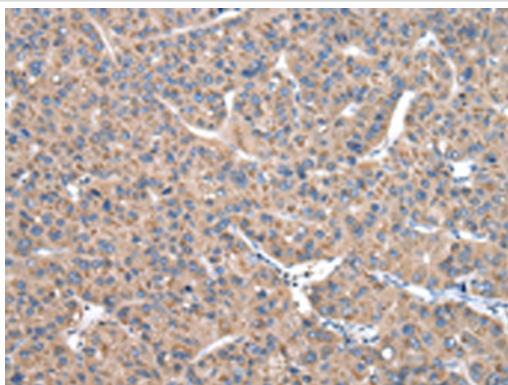
Lysate: 40 µg

Lane 1-2: Mouse brain tissue and 293T cell

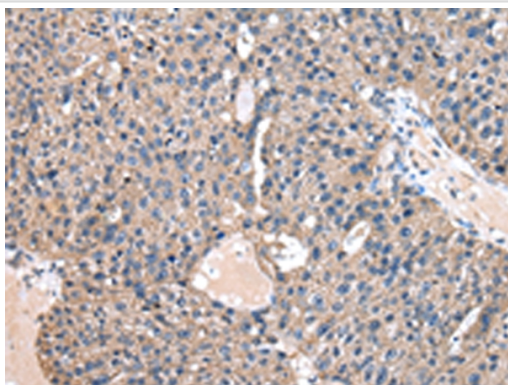
Primary antibody: 1/400 dilution

Secondary antibody: Goat anti rabbit IgG at 1/8000 dilution

Exposure time: 1 minute



Immunohistochemical analysis of paraffin-embedded Human liver cancer tissue using #43019 at dilution 1/20.



Immunohistochemical analysis of paraffin-embedded Human breast cancer tissue using #43019 at dilution 1/20.

Background

This gene encodes a calcium/calmodulin-dependent serine protein kinase. The encoded protein is a MAGUK (membrane-associated guanylate kinase) protein family member. These proteins are scaffold proteins and the encoded protein is located at synapses in the brain. Mutations in this gene are associated with FG syndrome 4, mental retardation and microcephaly with pontine and cerebellar hypoplasia, and a form of X-linked mental retardation. Multiple transcript variants encoding different isoforms have been found for this gene.

Note: This product is for in vitro research use only