

# COMT Antibody

Catalog No: #43047



Orders: [order@signalwayantibody.com](mailto:order@signalwayantibody.com)  
Support: [tech@signalwayantibody.com](mailto:tech@signalwayantibody.com)

## Description

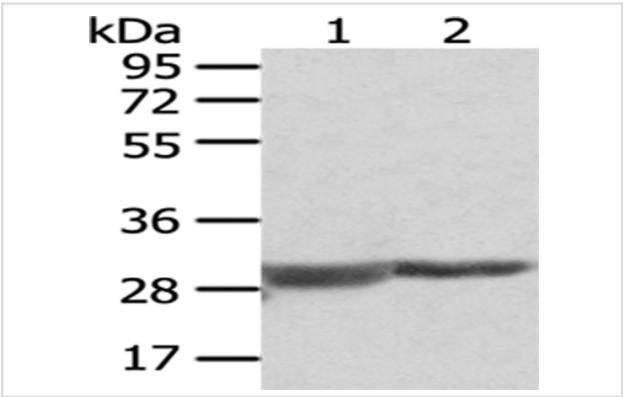
Product Name	COMT Antibody
Host Species	Rabbit
Clonality	Polyclonal
Purification	Antigen affinity purification.
Applications	WB IHC
Species Reactivity	Hu
Specificity	The antibody detects endogenous levels of total COMT protein.
Immunogen Type	protein
Immunogen Description	Fusion protein of human COMT
Target Name	COMT
Other Names	HEL-S-98n
Accession No.	Swiss-Prot#: P21964Gene ID: 1312
Uniprot	P21964
GeneID	1312;
Calculated MW	30kd
Concentration	1mg/ml
Formulation	Rabbit IgG in pH7.4 PBS, 0.05% NaN3, 40% Glycerol.
Storage	Store at -20°C

## Application Details

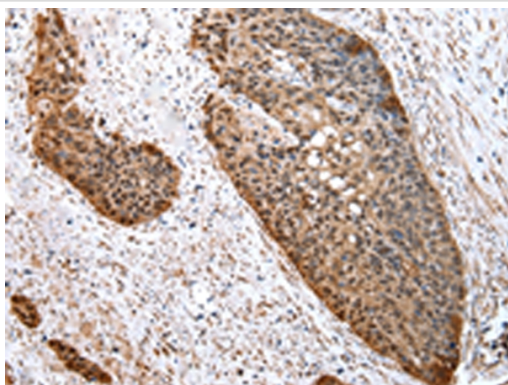
Western blotting: 1:200-1:1000

Immunohistochemistry: 1:25-1:100

## Images



Gel: 8%SDS-PAGE  
Lysate: 40 µg  
Lane 1-2: 293T and hepg2 cell  
Primary antibody: 1/400 dilution  
Secondary antibody: Goat anti rabbit IgG at 1/8000 dilution  
Exposure time: 5 seconds



Immunohistochemical analysis of paraffin-embedded Human esophagus cancer tissue using #43047 at dilution 1/20. (Original magnification: B'Γ• 200)

## Background

Catechol-O-methyltransferase catalyzes the transfer of a methyl group from S-adenosylmethionine to catecholamines, including the neurotransmitters dopamine, epinephrine, and norepinephrine. This O-methylation results in one of the major degradative pathways of the catecholamine transmitters. In addition to its role in the metabolism of endogenous substances, COMT is important in the metabolism of catechol drugs used in the treatment of hypertension, asthma, and Parkinson disease. COMT is found in two forms in tissues, a soluble form (S-COMT) and a membrane-bound form (MB-COMT). The differences between S-COMT and MB-COMT reside within the N-termini.

Note: This product is for in vitro research use only