

## HPD Antibody

Catalog No: #43066

Orders: [order@signalwayantibody.com](mailto:order@signalwayantibody.com)Support: [tech@signalwayantibody.com](mailto:tech@signalwayantibody.com)

## Description

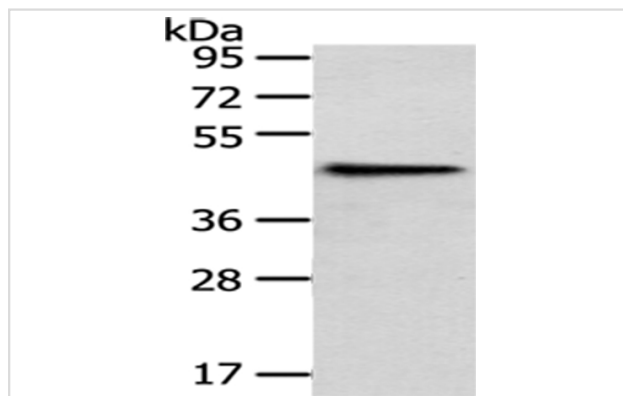
Product Name	HPD Antibody
Host Species	Rabbit
Clonality	Polyclonal
Purification	Antigen affinity purification.
Applications	WB IHC
Species Reactivity	Hu Ms
Specificity	The antibody detects endogenous levels of total HPD protein.
Immunogen Type	protein
Immunogen Description	Fusion protein of human HPD
Target Name	HPD
Other Names	PPD; 4HPPD; GLOD3; 4-HPPD; HPPDASE
Accession No.	Swiss-Prot#: P32754Gene ID: 3242
Uniprot	P32754
GeneID	3242;
Calculated MW	45kd
Concentration	1mg/ml
Formulation	Rabbit IgG in pH7.4 PBS, 0.05% NaN <sub>3</sub> , 40% Glycerol.
Storage	Store at -20°C

## Application Details

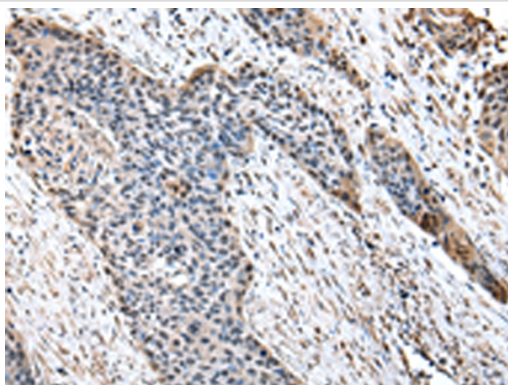
Western blotting: 1:200-1:1000

Immunohistochemistry: 1:25-1:100

## Images



Gel: 8%SDS-PAGE  
Lysate: 40 µg  
Lane: Mouse liver tissue  
Primary antibody: 1/400 dilution  
Secondary antibody: Goat anti rabbit IgG at 1/8000 dilution  
Exposure time: 20 seconds



Immunohistochemical analysis of paraffin-embedded Human esophagus cancer tissue using #43066 at dilution 1/20. (Original magnification: B\*F• 200)

## Background

The protein encoded by this gene is an enzyme in the catabolic pathway of tyrosine. The encoded protein catalyzes the conversion of 4-hydroxyphenylpyruvate to homogentisate. Defects in this gene are a cause of tyrosinemia type 3 (TYRO3) and hawkinsinuria (HAWK). Two transcript variants encoding different isoforms have been found for this gene.

Note: This product is for in vitro research use only