

## CCT4 Antibody

Catalog No: #43068

Orders: [order@signalwayantibody.com](mailto:order@signalwayantibody.com)Support: [tech@signalwayantibody.com](mailto:tech@signalwayantibody.com)

## Description

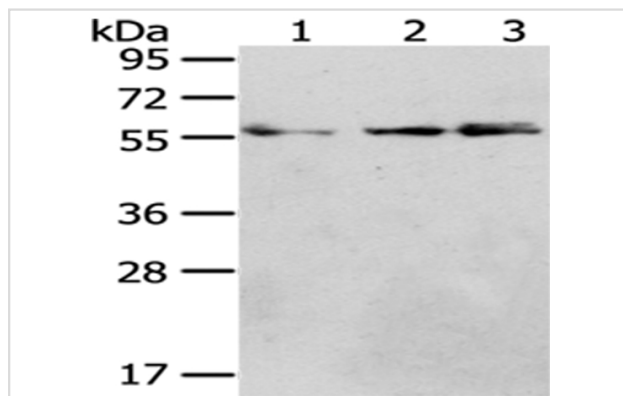
Product Name	CCT4 Antibody
Host Species	Rabbit
Clonality	Polyclonal
Purification	Antigen affinity purification.
Applications	WB IHC
Species Reactivity	Hu
Specificity	The antibody detects endogenous levels of total CCT4 protein.
Immunogen Type	protein
Immunogen Description	Fusion protein of human CCT4
Target Name	CCT4
Other Names	SRB; Cctd; CCT-DELTA
Accession No.	Swiss-Prot#: P50991Gene ID: 10575
Uniprot	P50991
GeneID	10575;
Calculated MW	58kd
Concentration	1mg/ml
Formulation	Rabbit IgG in pH7.4 PBS, 0.05% NaN <sub>3</sub> , 40% Glycerol.
Storage	Store at -20°C

## Application Details

Western blotting: 1:200-1:1000

Immunohistochemistry: 1:25-1:100

## Images



Gel: 8%SDS-PAGE

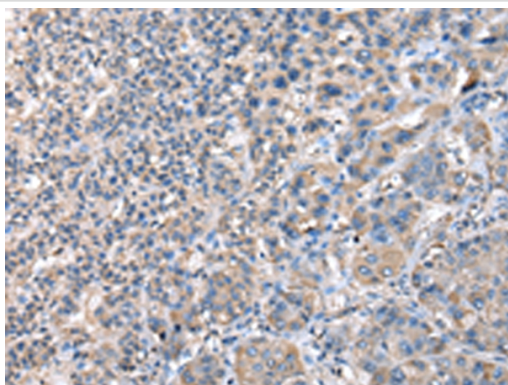
Lysate: 40 µg

Lane 1-3: HeLa, Jurkat and Raji cell

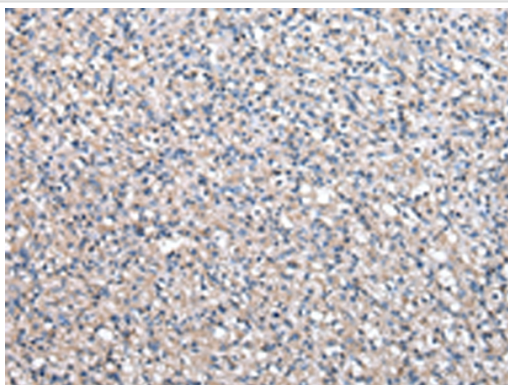
Primary antibody: 1/400 dilution

Secondary antibody: Goat anti rabbit IgG at 1/8000 dilution

Exposure time: 10 seconds



Immunohistochemical analysis of paraffin-embedded Human liver cancer tissue using #43068 at dilution 1/20.



Immunohistochemical analysis of paraffin-embedded Human prostate cancer tissue using #43068 at dilution 1/20.

## Background

The chaperonin containing TCP1 (MIM 186980) complex (CCT), also called the TCP1 ring complex, consists of 2 back-to-back rings, each containing 8 unique but homologous subunits, such as CCT4. CCT assists the folding of newly translated polypeptide substrates through multiple rounds of ATP-driven release and rebinding of partially folded intermediate forms.?

Note: This product is for in vitro research use only