

KYNU Antibody

Catalog No: #43079



Orders: order@signalwayantibody.com
Support: tech@signalwayantibody.com

Description

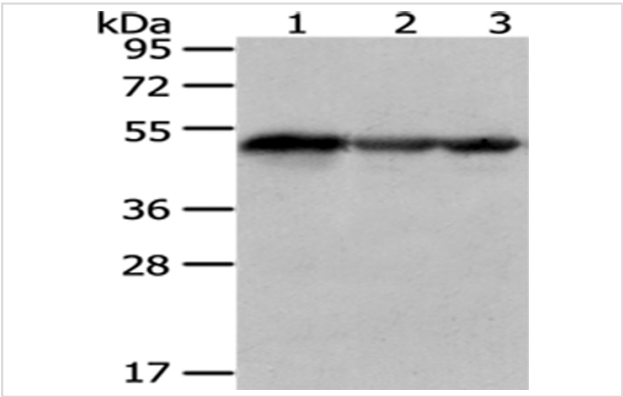
Product Name	KYNU Antibody
Host Species	Rabbit
Clonality	Polyclonal
Purification	Antigen affinity purification.
Applications	WB IHC
Species Reactivity	Hu
Specificity	The antibody detects endogenous levels of total KYNU protein.
Immunogen Type	protein
Immunogen Description	Fusion protein of human KYNU
Target Name	KYNU
Other Names	KYNUU
Accession No.	Swiss-Prot#: Q16719Gene ID: 8942
Uniprot	Q16719
GeneID	8942;
Calculated MW	52kd
Concentration	1mg/ml
Formulation	Rabbit IgG in pH7.4 PBS, 0.05% NaN3, 40% Glycerol.
Storage	Store at -20°C

Application Details

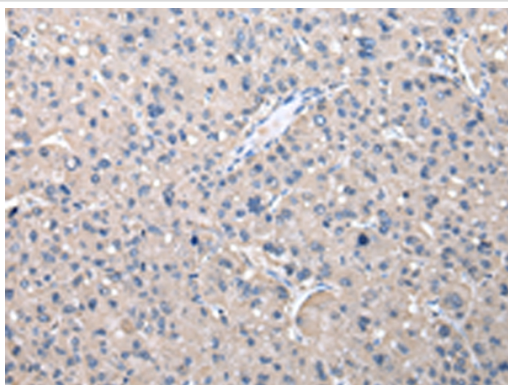
Western blotting: 1:500-1:2000

Immunohistochemistry: 1:25-1:100

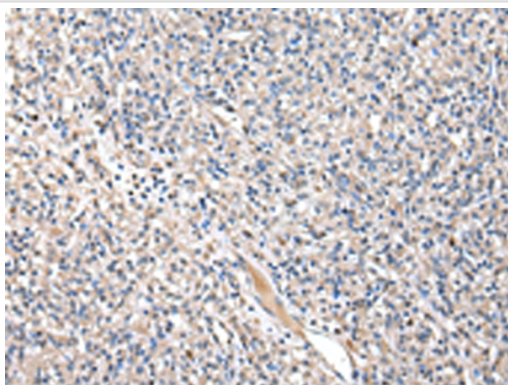
Images



Gel: 8%SDS-PAGE
Lysate: 40 µg
Lane 1-3: A549, hela and hepg2 cell
Primary antibody: 1/400 dilution
Secondary antibody: Goat anti rabbit IgG at 1/8000 dilution
Exposure time: 3 seconds



Immunohistochemical analysis of paraffin-embedded Human liver cancer tissue using #43079 at dilution 1/20.



Immunohistochemical analysis of paraffin-embedded Human prostate cancer tissue using #43079 at dilution 1/20.

Background

Kynureninase is a pyridoxal-5'-phosphate (pyridoxal-P) dependent enzyme that catalyzes the cleavage of L-kynurenine and L-3-hydroxykynurenine into anthranilic and 3-hydroxyanthranilic acids, respectively. Kynureninase is involved in the biosynthesis of NAD cofactors from tryptophan through the kynurenine pathway. Alternative splicing results in multiple transcript variants.

Note: This product is for in vitro research use only