

G protein-coupled receptor 120 antibody

Catalog No: #22831



Orders: order@signalwayantibody.com
Support: tech@signalwayantibody.com

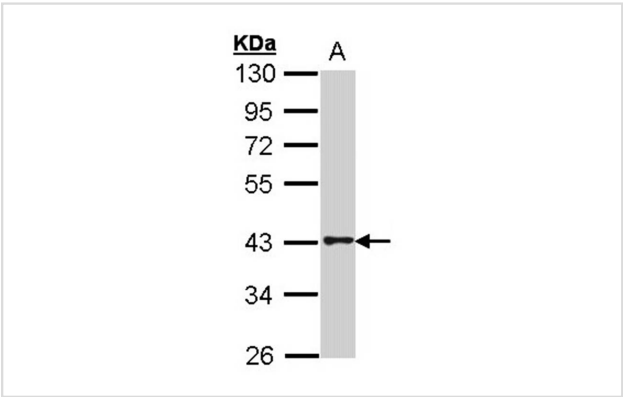
Description

Product Name	G protein-coupled receptor 120 antibody
Host Species	Rabbit
Clonality	Polyclonal
Purification	Purified by antigen-affinity chromatography.
Applications	WB IHC
Species Reactivity	Hu
Immunogen Type	Peptide
Immunogen Description	Synthetic peptide contain a sequence corresponding to a region within amino acids 1 and 41 of Human GPR120
Target Name	G protein-coupled receptor 120
Accession No.	Swiss-Prot:Q5NUL3Gene ID:338557
Uniprot	Q5NUL3
GeneID	338557;
Concentration	1mg/ml
Formulation	Supplied in 0.1M Tris-buffered saline with 10% Glycerol (pH7.0). 0.01% Thimerosal was added as a preservative.
Storage	Store at -20°C for long term preservation (recommended). Store at 4°C for short term use.

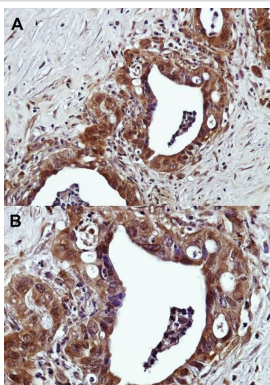
Application Details

Predicted MW: 42kd
Western blotting: 1:500-1:2000
Immunohistochemistry: 1:50-1:500

Images



Sample (30 ug of whole cell lysate)
A: HeLa
10% SDS PAGE
Primary antibody diluted at 1: 2000



A:Immunohistochemical analysis of paraffin-embedded Human prostate adenocarcinoma, using GPR120 antibody at 1: 500 dilution.(20X).

B:Immunohistochemical analysis of paraffin-embedded Human prostate adenocarcinoma, using GPR120 antibody at 1: 500 dilution.(40X)

Background

GPR120 is a member of the rhodopsin family of G protein-coupled receptors (GPRs) (Fredriksson et al., 2003 [PubMed 14623098]).[supplied by OMIM]

Note: This product is for in vitro research use only