

SPATA18 Antibody

Catalog No: #43147



Orders: order@signalwayantibody.com
Support: tech@signalwayantibody.com

Description

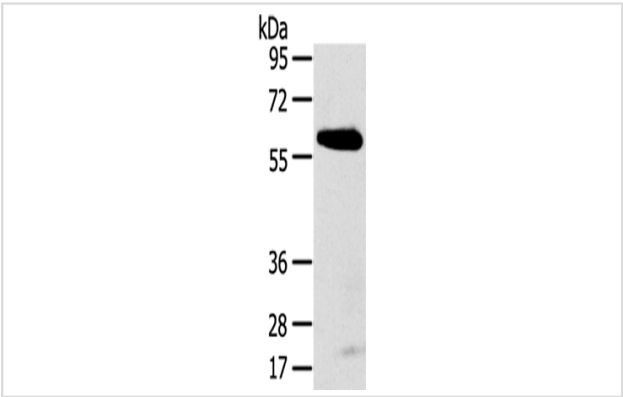
Product Name	SPATA18 Antibody
Host Species	Rabbit
Clonality	Polyclonal
Purification	Antigen affinity purification.
Applications	WB IHC
Species Reactivity	Hu
Specificity	The antibody detects endogenous levels of total SPATA18 protein.
Immunogen Type	peptide
Immunogen Description	Synthetic peptide of human SPATA18
Target Name	SPATA18
Other Names	Mieap; SPETEX1
Accession No.	Swiss-Prot#: Q8TC71Gene ID: 132671
Uniprot	Q8TC71
GeneID	132671;
Calculated MW	61kd
Concentration	1.6mg/ml
Formulation	Rabbit IgG in pH7.4 PBS, 0.05% NaN3, 40% Glycerol.
Storage	Store at -20°C

Application Details

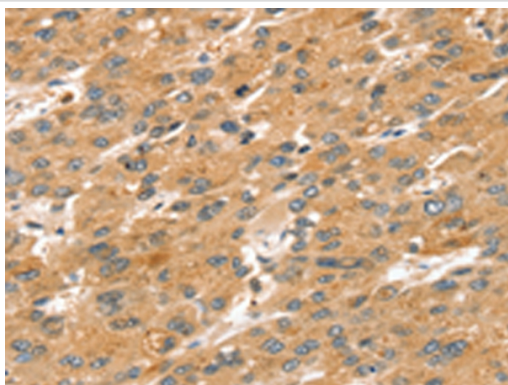
Western blotting: 1:200-1:1000

Immunohistochemistry: 1:10-1:50

Images



Gel: 8%SDS-PAGE
Lysate: 40 µg
Lane: Human normal stomach tissue
Primary antibody: 1/250 dilution
Secondary antibody: Goat anti rabbit IgG at 1/8000 dilution
Exposure time: 5 minutes



Immunohistochemical analysis of paraffin-embedded Human liver cancer tissue using #43147 at dilution 1/20,

Background

SPATA18 (spermatogenesis associated 18), also known as Mieap or SPETEX1, is a 538 amino acid protein that is thought to play a role in cell differentiation during spermatogenesis, particularly during development from late elongate spermatids to mature spermatozoa. Localizing to cytoplasm, SPATA18 is encoded by a gene that maps to human chromosome 4q12.?

Note: This product is for in vitro research use only