

TUSC5 Antibody

Catalog No: #43173

Orders: order@signalwayantibody.comSupport: tech@signalwayantibody.com

Description

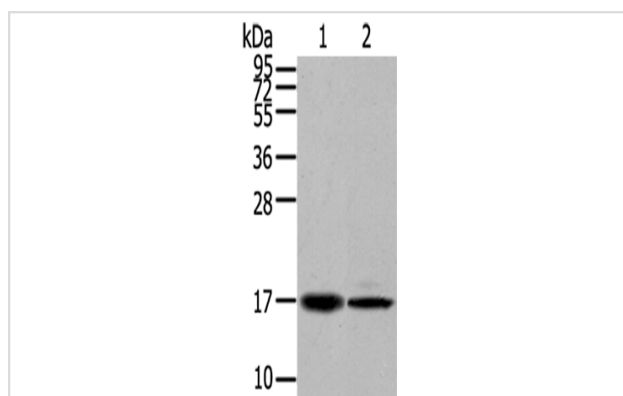
Product Name	TUSC5 Antibody
Host Species	Rabbit
Clonality	Polyclonal
Purification	Antigen affinity purification.
Applications	WB IHC
Species Reactivity	Hu
Specificity	The antibody detects endogenous levels of total TUSC5 protein.
Immunogen Description	Synthetic peptide of human TUSC5
Target Name	TUSC5
Other Names	DSPB1; LOST1; IFITMD3
Accession No.	Swiss-Prot#: Q8IXB3 Gene ID: 286753
Uniprot	Q8IXB3
GeneID	286753;
Calculated MW	19kd
Concentration	2.8mg/ml
Formulation	Rabbit IgG in pH7.4 PBS, 0.05% NaN ₃ , 40% Glycerol.
Storage	Store at -20°C

Application Details

Western blotting: 1:500-1:2000

Immunohistochemistry: 1:100-1:200

Images



Gel: 12%SDS-PAGE

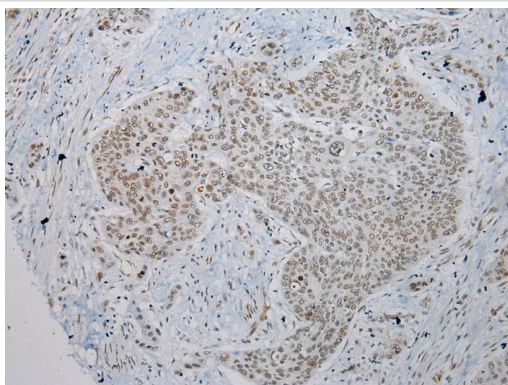
Lysate: 40 µg

Lane 1-2: Lovo cells, 231 cells,

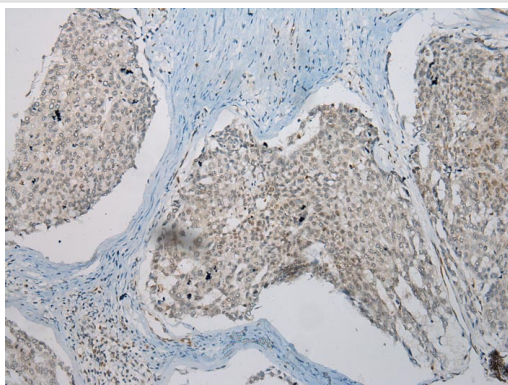
Primary antibody: 1/200 dilution

Secondary antibody: Goat anti rabbit IgG at 1/8000 dilution

Exposure time: 40 seconds



Immunohistochemical analysis of paraffin-embedded Human Esophagus cancer tissue using #43173 at dilution 1/200.



Immunohistochemical analysis of paraffin-embedded Human Liver cancer tissue using #43173 at dilution 1/200.

Background

TUSC5 (tumor suppressor candidate 5), also known as protein located at seventeen-p-thirteen point three 1, LOST1 or IFITMD3 (interferon-induced transmembrane domain-containing protein D3), is a 177 amino acid multi-pass membrane protein that belongs to the CD225 family. Thought to play a role in fat metabolism, TUSC5 is highly expressed in mammary gland, heart, smooth muscle, skeletal muscle and stomach, with lower levels found in lung and brain.?

Note: This product is for in vitro research use only