

XKRX Antibody

Catalog No: #43203

Orders: order@signalwayantibody.comSupport: tech@signalwayantibody.com

Description

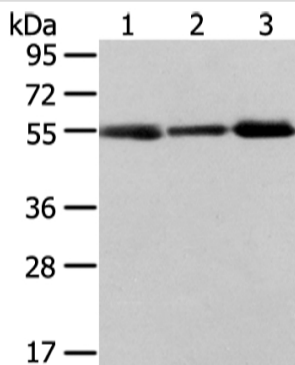
Product Name	XKRX Antibody
Host Species	Rabbit
Clonality	Polyclonal
Purification	Antigen affinity purification.
Applications	WB IHC
Species Reactivity	Hu
Specificity	The antibody detects endogenous levels of total XKRX protein.
Immunogen Type	peptide
Immunogen Description	Synthetic peptide of human XKRX
Target Name	XKRX
Other Names	XKR2; XRG2; XPLAC
Accession No.	Swiss-Prot#: Q6PP77 Gene ID: 402415
Uniprot	Q6PP77
GeneID	402415;
Calculated MW	52kd
Concentration	1.6mg/ml
Formulation	Rabbit IgG in pH7.4 PBS, 0.05% NaN ₃ , 40% Glycerol.
Storage	Store at -20°C

Application Details

Western blotting: 1:500-1:2000

Immunohistochemistry: 1:10-1:50

Images



Gel: 8%SDS-PAGE

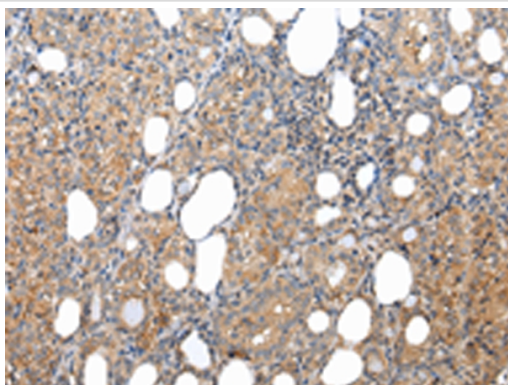
Lysate: 40 µg

Lane 1-3: Human normal stomach tissue, human liver cancer and thyroid cancer tissue

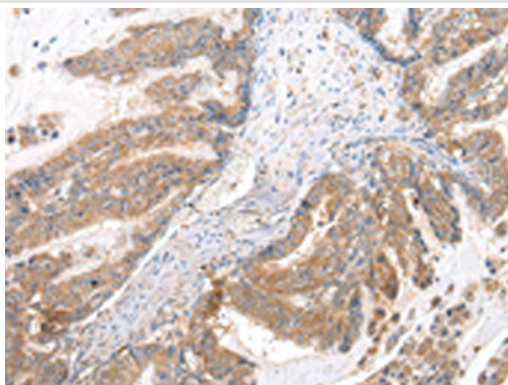
Primary antibody: 1/400 dilution

Secondary antibody: Goat anti rabbit IgG at 1/8000 dilution

Exposure time: 2 minutes



Immunohistochemical analysis of paraffin-embedded Human thyroid cancer tissue using #43203 at dilution 1/25.



Immunohistochemical analysis of paraffin-embedded Human esophagus cancer tissue using #43203 at dilution 1/25.

Background

This gene encodes a protein that is related to a component of the XK/Kell complex of the Kell blood group system. The encoded protein includes several transmembrane domains, is known to be exposed to the cell surface, and may function as a membrane transporter.

Note: This product is for in vitro research use only