

ZPR1 Antibody

Catalog No: #43210

Orders: order@signalwayantibody.comSupport: tech@signalwayantibody.com

Description

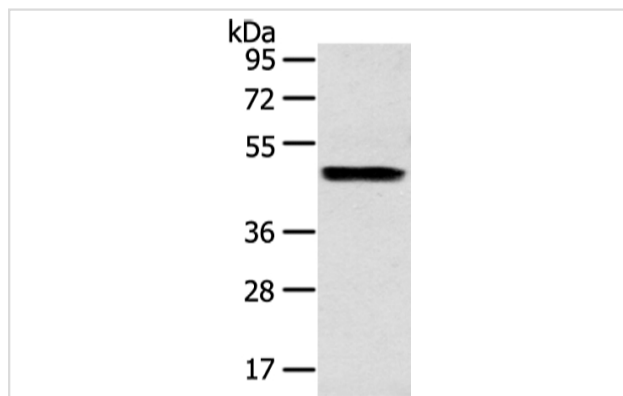
Product Name	ZPR1 Antibody
Host Species	Rabbit
Clonality	Polyclonal
Purification	Antigen affinity purification.
Applications	WB IHC
Species Reactivity	Hu
Specificity	The antibody detects endogenous levels of total ZPR1 protein.
Immunogen Type	peptide
Immunogen Description	Synthetic peptide of human ZPR1
Target Name	ZPR1
Other Names	ZNF259
Accession No.	Swiss-Prot#: O75312Gene ID: 8882
Uniprot	O75312
GeneID	8882;
Calculated MW	51kd
Concentration	0.8mg/ml
Formulation	Rabbit IgG in pH7.4 PBS, 0.05% NaN ₃ , 40% Glycerol.
Storage	Store at -20°C

Application Details

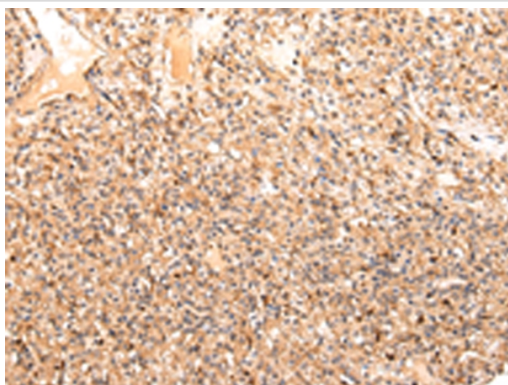
Western blotting: 1:500-1:2000

Immunohistochemistry: 1:25-1:100

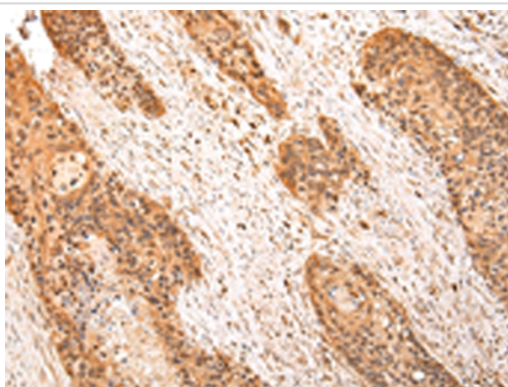
Images



Gel: 8%SDS-PAGE
Lysate: 40 µg
Lane: Human liver cancer tissue
Primary antibody: 1/200 dilution
Secondary antibody: Goat anti rabbit IgG at 1/8000 dilution
Exposure time: 15 seconds



Immunohistochemical analysis of paraffin-embedded Human prostate cancer tissue using #43210 at dilution 1/20.



Immunohistochemical analysis of paraffin-embedded Human esophagus cancer tissue using #43210 at dilution 1/20.

Background

ZPR1 is a zinc finger-containing protein that is capable of binding to the intracellular tyrosine kinase domain of the epidermal growth factor receptor. Stimulation of mammalian cells with epidermal growth factor reduces ZPR1 affinity for the EGFR and leads to an accumulation of the protein in the nucleus. The ZPR1 zinc finger is necessary for its association with the EGFR.

Note: This product is for in vitro research use only