

HTR1B Antibody

Catalog No: #43284

Orders: order@signalwayantibody.comSupport: tech@signalwayantibody.com

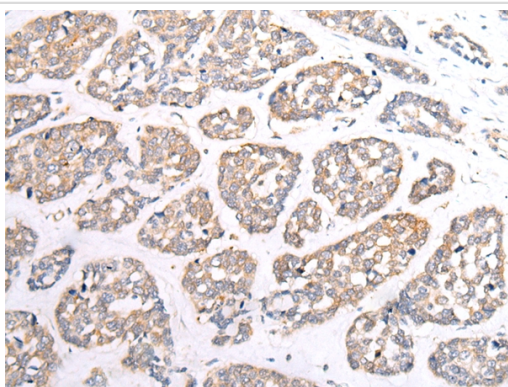
Description

Product Name	HTR1B Antibody
Host Species	Rabbit
Clonality	Polyclonal
Purification	Antigen affinity purification.
Applications	IHC
Species Reactivity	Hu
Specificity	The antibody detects endogenous levels of total HTR1B protein.
Immunogen Type	peptide
Immunogen Description	Synthetic peptide of human HTR1B
Target Name	HTR1B
Other Names	S12; 5-HT1B; HTR1D2; HTR1DB; 5-HT1DB
Accession No.	Swiss-Prot#: P28222Gene ID: 3351
Uniprot	P28222
GeneID	3351;
Concentration	0.8mg/ml
Formulation	Rabbit IgG in pH7.4 PBS, 0.05% NaN ₃ , 40% Glycerol.
Storage	Store at -20°C

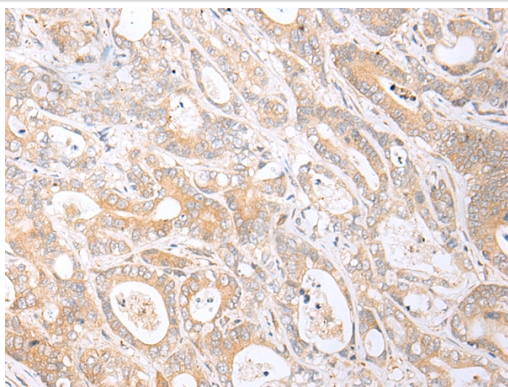
Application Details

Immunohistochemistry: 1:25-1:100

Images



Immunohistochemical analysis of paraffin-embedded Human esophagus cancer tissue using #43284 at dilution 1/20.



Immunohistochemical analysis of paraffin-embedded Human gastric cancer tissue using #43284 at dilution 1/20.

Background

The neurotransmitter serotonin (5-hydroxytryptamine; 5-HT) exerts a wide variety of physiologic functions through a multiplicity of receptors and may be involved in human neuropsychiatric disorders such as anxiety, depression, or migraine. These receptors consist of several main groups subdivided into several distinct subtypes on the basis of their pharmacologic characteristics, coupling to intracellular second messengers, and distribution within the nervous system (Zifa and Fillion, 1992 [PubMed 1359584]). The serotonergic receptors belong to the multigene family of receptors coupled to guanine nucleotide-binding proteins.

Note: This product is for in vitro research use only