

RPL35A Antibody

Catalog No: #43356



Orders: order@signalwayantibody.com
Support: tech@signalwayantibody.com

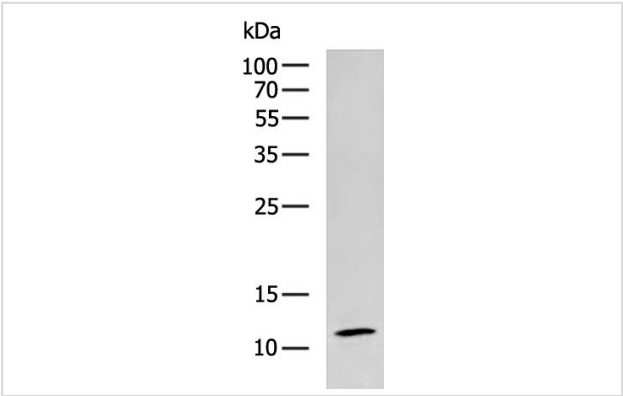
Description

Product Name	RPL35A Antibody
Host Species	Rabbit
Clonality	Polyclonal
Purification	Antigen affinity purification.
Applications	ELISA, WB, IHC
Species Reactivity	Hu,MsoO Rt
Specificity	The antibody detects endogenous levels of RPL35A protein.
Immunogen Description	Fusion protein of human RPL35A
Target Name	RPL35A
Other Names	DBA5; L35A
Accession No.	Swiss-Prot#: P18077Gene ID: 6165
Uniprot	P18077
GeneID	6165;
Calculated MW	13kd
Concentration	0.7 mg/ml
Formulation	Rabbit IgG in pH7.4 PBS, 0.05% NaN3, 40% Glycerol.
Storage	Store at -20°C

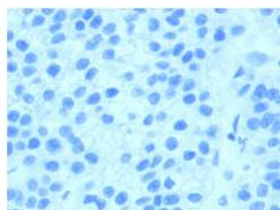
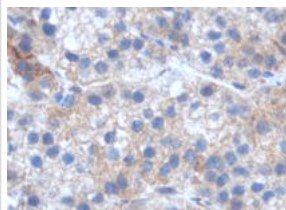
Application Details

WB 1:500 - 1:2000. IHC 1:50 - 1:200. ELISA: 1:5000-1:10000

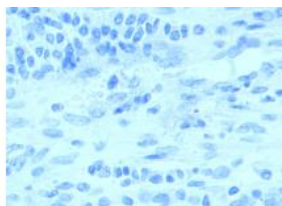
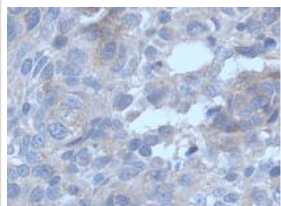
Images



Gel: 12% SDS-PAGE
Lysate: 40 ug
Lane: Jurkat cell lysate
Primary antibody: at dilution 1/700
Secondary antibody: at 1/5000 dilution
Exposure time: 10 seconds



The image on the left is immunohistochemistry of paraffin-embedded Human liver cancer tissue at dilution 1/50, on the right is treated with fusion protein. (Original magnification: 200)



The image on the left is immunohistochemistry of paraffin-embedded Human lung cancer tissue at dilution 1/50, on the right is treated with fusion protein. (Original magnification: 200)

Background

Ribosomes, the organelles that catalyze protein synthesis, consist of a small 40S subunit and a large 60S subunit. Together these subunits are composed of 4 RNA species and approximately 80 structurally distinct proteins. This gene encodes a ribosomal protein that is a component of the 60S subunit. The protein belongs to the L35AE family of ribosomal proteins. It is located in the cytoplasm. The rat protein has been shown to bind to both initiator and elongator tRNAs, and thus, it is located at the P site, or P and A sites, of the ribosome.

Note: This product is for in vitro research use only