

FSD1L Antibody

Catalog No: #43362

Orders: order@signalwayantibody.comSupport: tech@signalwayantibody.com

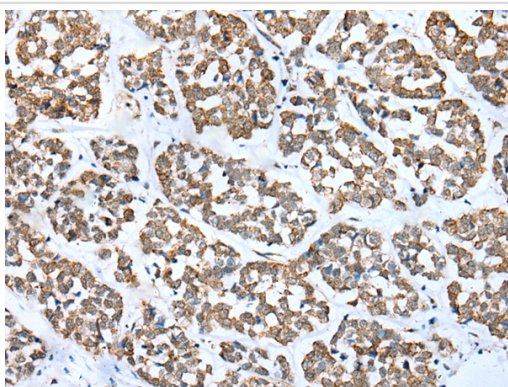
Description

Product Name	FSD1L Antibody
Host Species	Rabbit
Clonality	Polyclonal
Purification	Antigen affinity purification.
Applications	IHC
Species Reactivity	Hu
Specificity	The antibody detects endogenous levels of total FSD1L protein.
Immunogen Type	protein
Immunogen Description	Fusion protein of human FSD1L
Target Name	FSD1L
Other Names	MIR1; CCDC10; FSD1CL; FSD1NL; CSDUFD1
Accession No.	Swiss-Prot#: Q9BXM9Gene ID: 83856
Uniprot	Q9BXM9
GeneID	83856;
Concentration	1.6mg/ml
Formulation	Rabbit IgG in pH7.4 PBS, 0.05% NaN ₃ , 40% Glycerol.
Storage	Store at -20°C

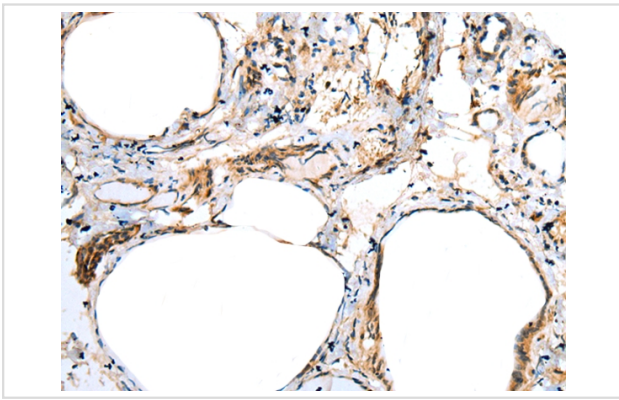
Application Details

Immunohistochemistry: 1:10-1:50

Images



Immunohistochemical analysis of paraffin-embedded Human esophagus cancer tissue using #43362 at dilution 1/30.



Immunohistochemical analysis of paraffin-embedded Human thyroid cancer tissue using #43362 at dilution 1/30.

Background

FSD1L (fibronectin type III and SPRY domain containing 1-like), also known as CCDC10 (coiled-coil domain-containing protein 10), CSDUFD1, MIR1 or FSD1CL, is a 530 amino acid protein containing one B30.2/SPRY domain, one COS domain, and a fibronectin type-III domain. Existing as three alternatively spliced isoforms, FSD1L is expressed primarily in brain, with lower levels of expression found in thymus, pituitary and testis. FSD1L may function in microtubule binding during interphase and is encoded by a gene that maps to human chromosome 9q31.2. Chromosome 9 consists of about 145 million bases and comprises approximately 4% of the human genome and encodes nearly 900 genes. Considered to play a role in gender determination, deletion of the distal portion of 9p can lead to development of male to female sex reversal, the phenotype of a female with a male X,Y genotype.

Note: This product is for in vitro research use only