

## ZNF621 Antibody

Catalog No: #43363

Orders: [order@signalwayantibody.com](mailto:order@signalwayantibody.com)Support: [tech@signalwayantibody.com](mailto:tech@signalwayantibody.com)

## Description

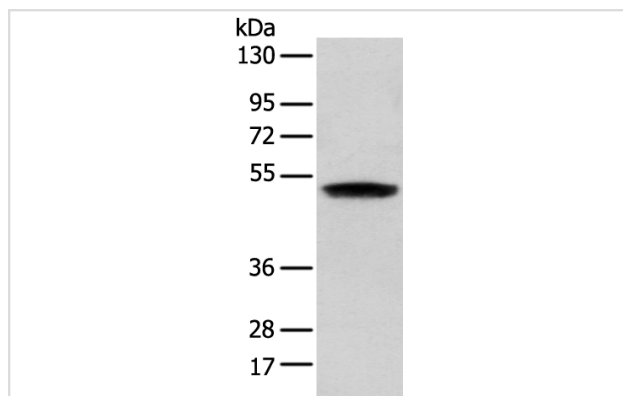
|                       |   |
|-----------------------|---|
| Product Name          | ZNF621 Antibody   |
| Host Species          | Rabbit  |
| Clonality             | Polyclonal  |
| Purification          | Antigen affinity purification.  |
| Applications          | WB IHC  |
| Species Reactivity    | Hu  |
| Specificity           | The antibody detects endogenous levels of total ZNF621 protein.                       |
| Immunogen Description | Fusion protein of human ZNF621  |
| Target Name           | ZNF621  |
| Other Names           | DKFZp686B11107; FLJ23786; FLJ45246; MGC126668; Zinc finger protein 621; ZN621; ZNF621 |
| Accession No.         | Swiss-Prot#: Q6ZSS3Gene ID: 285268  |
| Uniprot               | Q6ZSS3  |
| GeneID                | 285268;   |
| Calculated MW         | 49kd  |
| Concentration         | 1mg/ml  |
| Formulation           | Rabbit IgG in pH7.4 PBS, 0.05% NaN <sub>3</sub> , 40% Glycerol.                       |
| Storage               | Store at -20°C  |

## Application Details

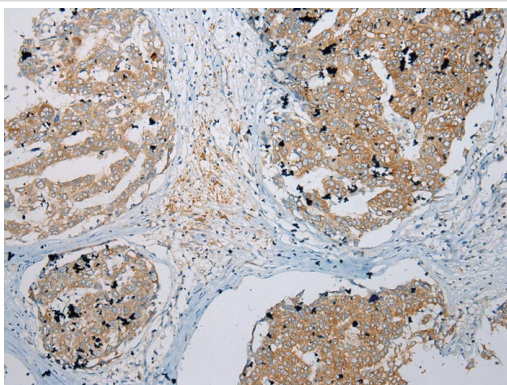
Western blotting: 1:200-1:1000

Immunohistochemistry: 1:100-1:200

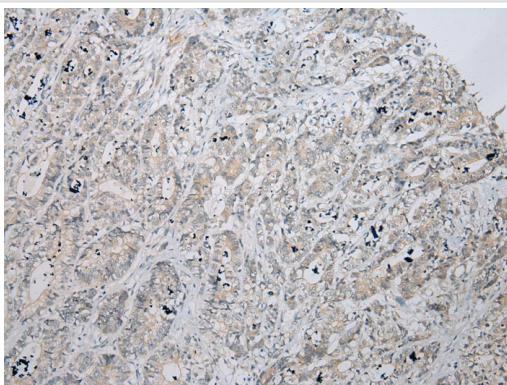
## Images



Gel: 8%SDS-PAGE  
Lysate: 40 µg  
Lane: Human 2-3 grade bladder transitional cell carcinoma tissue  
Primary antibody: 1/250 dilution  
Secondary antibody: Goat anti rabbit IgG at 1/8000 dilution  
Exposure time: 1 second



Immunohistochemical analysis of paraffin-embedded Human Liver cancer tissue using #43363 at dilution 1/200,



Immunohistochemical analysis of paraffin-embedded Human Gastric cancer tissue using #43363 at dilution 1/200,

## Background

As a member of the krueppel C2H2-type zinc-finger protein family, ZNF621 (Zinc finger protein 621) is a 439 amino acid nuclear protein that contains one KRAB domain and seven C2H2-type zinc fingers. The gene encoding ZNF621 maps to human chromosome 3, which is made up of about 214 million bases encoding over 1,100 genes, including a chemokine receptor (CKR) gene cluster and a variety of human cancer-related gene loci. Marfan Syndrome, porphyria, von Hippel-Lindau syndrome, osteogenesis imperfecta and Charcot-Marie-Tooth Disease are a few of the numerous genetic diseases associated with chromosome 3. There are two isoforms of ZNF621 that are produced as a result of alternative splicing events.

Note: This product is for in vitro research use only