

Mouse Anti-Human CD274 (PD-L1) mAb

Catalog No: #CM027



Package Size: #CM027-1 25ug #CM027-2 100ug

Orders: order@signalwayantibody.com
Support: tech@signalwayantibody.com

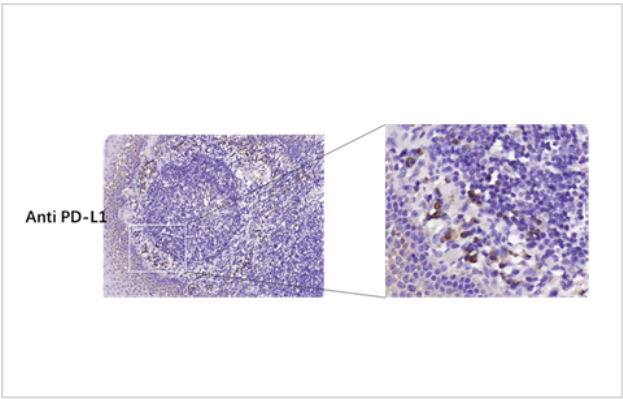
Description

Product Name	Mouse Anti-Human CD274 (PD-L1) mAb
Host Species	Mouse
Clonality	Monoclonal
Clone No.	4C5
Isotype	Mouse IgG1, κ
Applications	IHC
Species Reactivity	Hu
Immunogen Description	PD-L1 protein
Other Names	CD274
Storage	Store protected from light at 2-8°C. Do not freeze. The expiration date is indicated on the vial label.

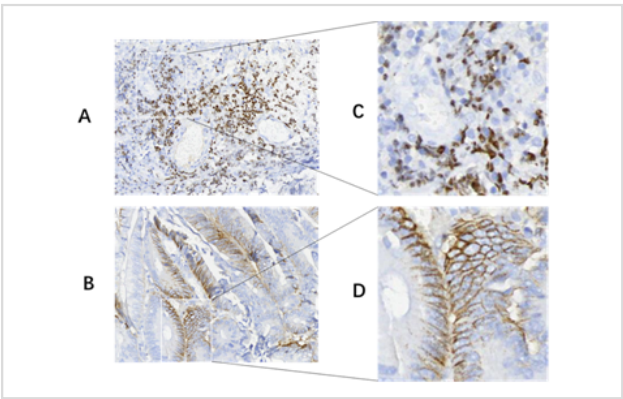
Application Details

Preparation: This antibody was produced from a hybridoma (mouse myeloma fused with spleen cells from a mouse immunized with PD-L1 protein). IgG1 fraction of culture supernatant from the hybridoma was purified by protein G affinity chromatography.

Images



Immunohistochemical analysis of paraffin-embedded normal human tonsil using PD-L1 mAb (IHC Specific)



Immunohistochemical analysis of paraffin-embedded human colon cancer tissue using PD-L1 mAb (IHC Specific)

Product Description

B7-H1 (also known as PD-L1 or CD274) is a B7 family member and it is a ligand for PD-1 (programmed death-1, a member of the CD28 family). PD-L1 is constitutively expressed on a wide variety of immunocytes and nonhematopoietic cell types including some malignant tumors, suggesting the potential mechanism of immune evasion. Emerging data suggest that patients whose tumors overexpress PD-L1 by IHC have improved clinical outcomes with anti-PD-1 directed therapy. The use of PD-L1 (B7-H1) immunohistochemistry (IHC) as a predictive biomarker is important for anti-PD-1 directed therapy in human cancer.

Note: This product is for in vitro research use only