

RSPH1 Antibody

Catalog No: #43368

Orders: order@signalwayantibody.comSupport: tech@signalwayantibody.com

Description

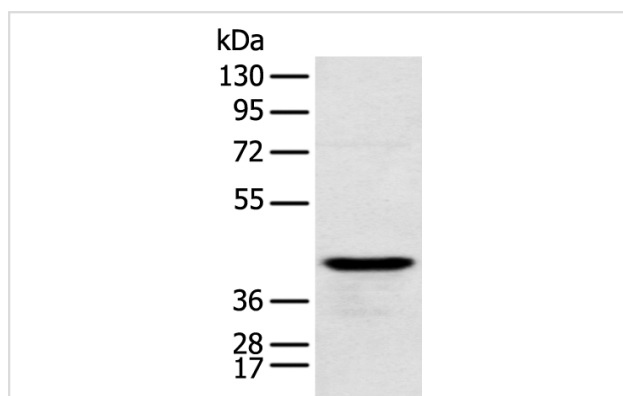
Product Name	RSPH1 Antibody
Host Species	Rabbit
Clonality	Polyclonal
Purification	Antigen affinity purification.
Applications	WB IHC
Species Reactivity	Hu
Specificity	The antibody detects endogenous levels of total RSPH1 protein.
Immunogen Description	Fusion protein of human RSPH1
Target Name	RSPH1
Other Names	CT79; TSA2; RSP44; TSGA2; RSPH10A
Accession No.	Swiss-Prot#: Q8WYR4Gene ID: 89765
Uniprot	Q8WYR4
GeneID	89765;
Calculated MW	35kd
Concentration	0.7mg/ml
Formulation	Rabbit IgG in pH7.4 PBS, 0.05% NaN ₃ , 40% Glycerol.
Storage	Store at -20°C

Application Details

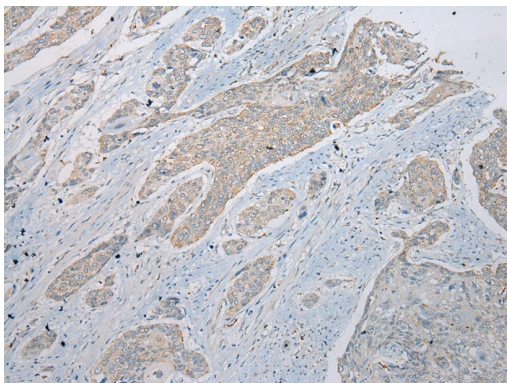
Western blotting: 1:500-1:2000

Immunohistochemistry: 1:100-1:200

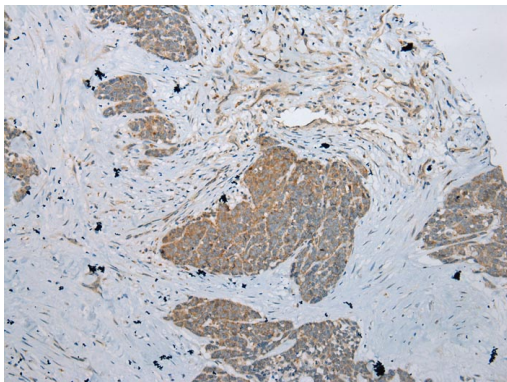
Images



Gel: 8%SDS-PAGE
Lysate: 40 µg
Lane: Human testis tissue
Primary antibody: 1/250 dilution
Secondary antibody: Goat anti rabbit IgG at 1/8000 dilution
Exposure time: 5 seconds



Immunohistochemical analysis of paraffin-embedded Human Esophagus tissue using #43368 at dilution 1/200,



Immunohistochemical analysis of paraffin-embedded Human Thyroid tissue using #43368 at dilution 1/200,

Background

This gene encodes a male meiotic metaphase chromosome-associated acidic protein. This gene is expressed in tissues with motile cilia or flagella, including the trachea, lungs, airway brushings, and testes. Mutations in this gene result in primary ciliary dyskinesia-24. Alternatively spliced transcript variants encoding different isoforms have been found for this gene.

Note: This product is for in vitro research use only