

## RILPL2 Antibody

Catalog No: #43385

Orders: [order@signalwayantibody.com](mailto:order@signalwayantibody.com)Support: [tech@signalwayantibody.com](mailto:tech@signalwayantibody.com)

## Description

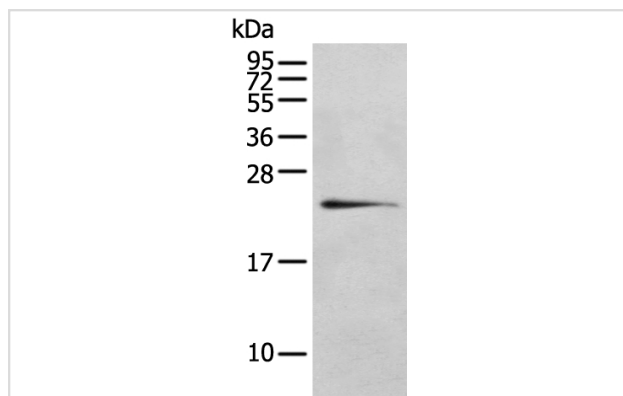
Product Name	RILPL2 Antibody
Host Species	Rabbit
Clonality	Polyclonal
Purification	Antigen affinity purification.
Applications	WB IHC
Species Reactivity	Hu
Specificity	The antibody detects endogenous levels of total RILPL2 protein.
Immunogen Description	Full length fusion protein of human RILPL2
Target Name	RILPL2
Other Names	RLP2
Accession No.	Swiss-Prot#: Q969X0 Gene ID: 196383
Uniprot	Q969X0
GeneID	196383;
Calculated MW	24kd
Concentration	1.3mg/ml
Formulation	Rabbit IgG in pH7.4 PBS, 0.05% NaN <sub>3</sub> , 40% Glycerol.
Storage	Store at -20°C

## Application Details

Western blotting: 1:200-1:1000

Immunohistochemistry: 1:20-1:100

## Images



Gel: 12%SDS-PAGE

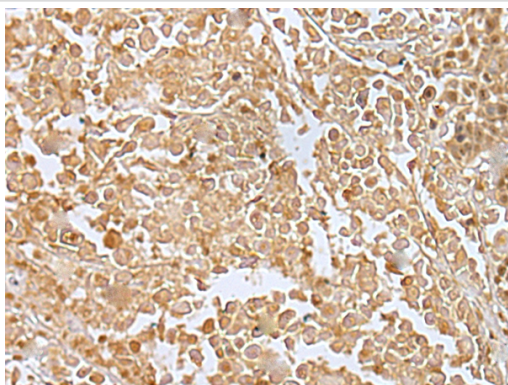
Lysate: 40 µg

Lane: 293T cell

Primary antibody: 1/400 dilution

Secondary antibody: Goat anti rabbit IgG at 1/8000 dilution

Exposure time: 30 seconds



Immunohistochemical analysis of paraffin-embedded Human colorectal cancer tissue using #43385 at dilution 1/30,

## Background

This gene encodes a protein that contains a rab-interacting lysosomal protein-like domain. This protein may be involved in regulating lysosome morphology. This protein may also be a target for the Hepatitis C virus and assist in viral replication. Alternate splicing results in multiple transcript variants.

Note: This product is for in vitro research use only