

ATR Antibody

Catalog No: #43410

Orders: order@signalwayantibody.comSupport: tech@signalwayantibody.com

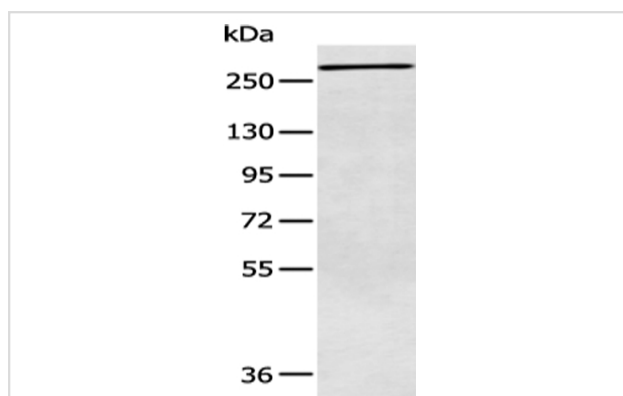
Description

Product Name	ATR Antibody
Host Species	Rabbit
Clonality	Polyclonal
Purification	Antigen affinity purification.
Applications	WB
Species Reactivity	Hu
Specificity	The antibody detects endogenous levels of total ATR protein.
Immunogen Type	peptide
Immunogen Description	Synthetic peptide of human ATR
Target Name	ATR
Other Names	FRP1; MEC1; SCKL; FCTCS; SCKL1
Accession No.	Swiss-Prot#: Q13535 Gene ID: 545
Uniprot	Q13535
GeneID	545;
Calculated MW	301kd
Concentration	0.6mg/ml
Formulation	Rabbit IgG in pH7.4 PBS, 0.05% NaN ₃ , 40% Glycerol.
Storage	Store at -20°C

Application Details

Western blotting: 1:200-1:1000

Images



Gel: 6%SDS-PAGE
 Lysate: 40 µg
 Lane: K562 cell
 Primary antibody: 1/200 dilution
 Secondary antibody: Goat anti rabbit IgG at 1/8000 dilution
 Exposure time: 1 minute

Background

The protein encoded by this gene belongs the PI3/PI4-kinase family, and is most closely related to ATM, a protein kinase encoded by the gene mutated in ataxia telangiectasia. This protein and ATM share similarity with Schizosaccharomyces pombe rad3, a cell cycle checkpoint gene required

for cell cycle arrest and DNA damage repair in response to DNA damage. This kinase has been shown to phosphorylate checkpoint kinase CHK1, checkpoint proteins RAD17, and RAD9, as well as tumor suppressor protein BRCA1.?

Note: This product is for in vitro research use only