

PRKDC Antibody

Catalog No: #43413

Orders: order@signalwayantibody.com

Support: tech@signalwayantibody.com

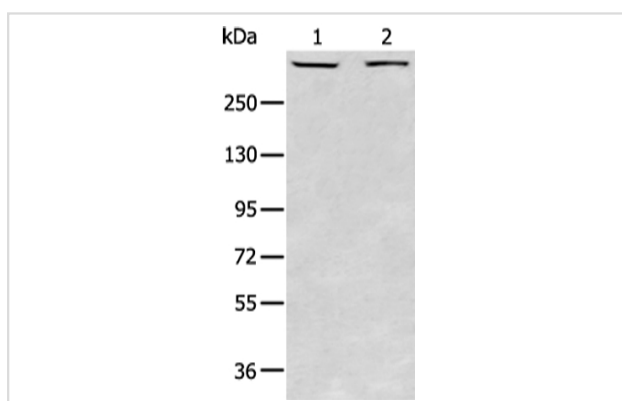
Description

Product Name	PRKDC Antibody
Host Species	Rabbit
Clonality	Polyclonal
Purification	Antigen affinity purification.
Applications	WB
Species Reactivity	Hu
Specificity	The antibody detects endogenous levels of total PRKDC protein.
Immunogen Type	peptide
Immunogen Description	Synthetic peptide of human PRKDC
Target Name	PRKDC
Other Names	HYRC; p350; DNAPK; DNP1; HYRC1; IMD26; XRCC7; DNA-PKcs
Accession No.	Swiss-Prot#: P78527 Gene ID: 5591
Calculated MW	469kd
Concentration	1.1mg/ml
Formulation	Rabbit IgG in pH7.4 PBS, 0.05% NaN ₃ , 40% Glycerol.
Storage	Store at -20°C

Application Details

Western blotting: 1:200-1:1000

Images



Gel: 6%SDS-PAGE

Lysate: 40 µg

Lane 1-2: 293T and K562 cell

Primary antibody: 1/200 dilution

Secondary antibody: Goat anti rabbit IgG at 1/8000 dilution

Exposure time: 20 seconds

Background

This gene encodes the catalytic subunit of the DNA-dependent protein kinase (DNA-PK). It functions with the Ku70/Ku80 heterodimer protein in DNA double strand break repair and recombination. The protein encoded is a member of the PI3/PI4-kinase family.

Note: This product is for in vitro research use only and is not intended for use in humans or animals.