

TRIM24 Antibody

Catalog No: #43420

Orders: order@signalwayantibody.comSupport: tech@signalwayantibody.com

Description

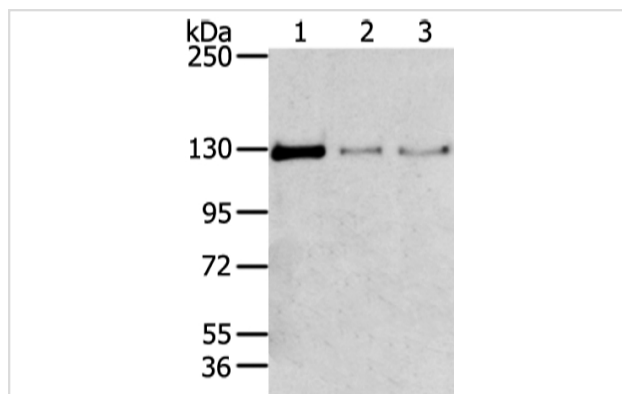
Product Name	TRIM24 Antibody
Host Species	Rabbit
Clonality	Polyclonal
Purification	Antigen affinity purification.
Applications	WB IHC
Species Reactivity	Hu
Specificity	The antibody detects endogenous levels of total TRIM24 protein.
Immunogen Description	Synthetic peptide of human TRIM24
Target Name	TRIM24
Other Names	PTC6; TF1A; TIF1; RNF82; TIF1A; hTIF1; TIF1ALPHA
Accession No.	Swiss-Prot#: O15164Gene ID: 8805
Uniprot	O15164
GeneID	8805;
Calculated MW	117/113kd
Concentration	2.8mg/ml
Formulation	Rabbit IgG in pH7.4 PBS, 0.05% NaN ₃ , 40% Glycerol.
Storage	Store at -20°C

Application Details

Western blotting: 1:500-1:2000

Immunohistochemistry: 1:20-1:100

Images



Gel: 6%SDS-PAGE

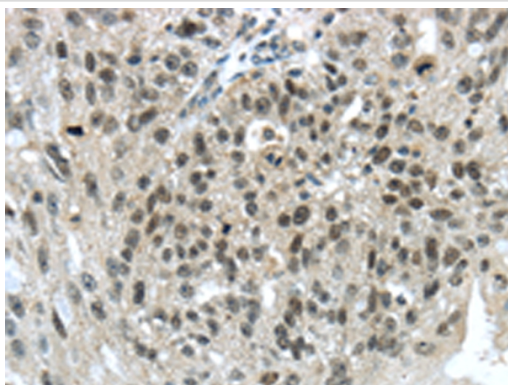
Lysate: 80 µg

Lane 1-3: 293T, 231 and lo2 cell

Primary antibody: 1/400 dilution

Secondary antibody: Goat anti rabbit IgG at 1/8000 dilution

Exposure time: 1 minute



Immunohistochemical analysis of paraffin-embedded Human breast cancer tissue using #43420 at dilution 1/40,

Background

The protein encoded by this gene mediates transcriptional control by interaction with the activation function 2 (AF2) region of several nuclear receptors, including the estrogen, retinoic acid, and vitamin D3 receptors. The protein localizes to nuclear bodies and is thought to associate with chromatin and heterochromatin-associated factors. The protein is a member of the tripartite motif (TRIM) family. The TRIM motif includes three zinc-binding domains - a RING, a B-box type 1 and a B-box type 2 - and a coiled-coil region.

Note: This product is for in vitro research use only