

Fatty Acid Synthase antibody

Catalog No: #22868



Orders: [order@signalwayantibody.com](mailto:order@signalwayantibody.com)  
Support: [tech@signalwayantibody.com](mailto:tech@signalwayantibody.com)

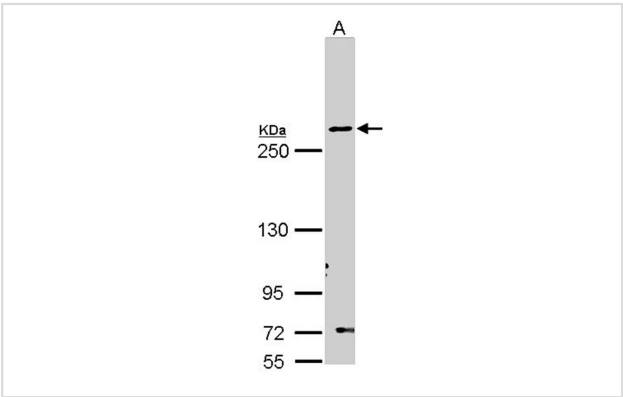
Description

Product Name	Fatty Acid Synthase antibody
Host Species	Rabbit
Clonality	Polyclonal
Purification	Purified by antigen-affinity chromatography.
Applications	WB IHC IF
Species Reactivity	Hu
Immunogen Type	Recombinant protein
Immunogen Description	Recombinant protein fragment contain a sequence corresponding to a region within amino acids 401 and 664 of Fatty Acid Synthase
Target Name	Fatty Acid Synthase
Accession No.	Swiss-Prot:P49327Gene ID:2194
Uniprot	P49327
GeneID	2194;
Concentration	1mg/ml
Formulation	Supplied in 0.1M Tris-buffered saline with 10% Glycerol (pH7.0). 0.01% Thimerosal was added as a preservative.
Storage	Store at -20°C for long term preservation (recommended). Store at 4°C for short term use.

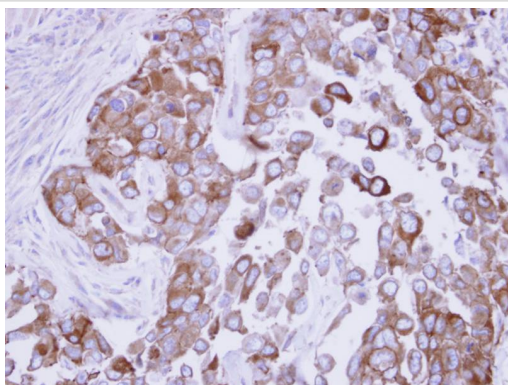
Application Details

Predicted MW: 273kd  
Western blotting: 1:500-1:3000  
Immunohistochemistry: 1:100-1:500  
Immunofluorescence: 1:100-1:200

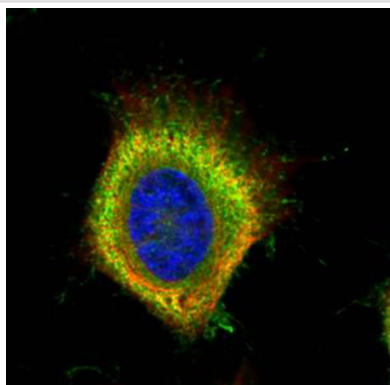
Images



Sample (30 ug of whole cell lysate)  
A: Molt-4  
5% SDS PAGE  
Primary antibody diluted at 1: 1000



Immunohistochemical analysis of paraffin-embedded OECM1 xenograft, using Fatty Acid Synthase antibody at 1: 500 dilution.



Confocal immunofluorescence analysis (Olympus FV10i) of paraformaldehyde-fixed HeLa, using Fatty Acid Synthase antibody (Green) at 1: 500 dilution and alpha-tubulin antibody (Red) at 1: 2000.

## Background

The enzyme encoded by this gene is a multifunctional protein. Its main function is to catalyze the synthesis of palmitate from acetyl-CoA and malonyl-CoA, in the presence of NADPH, into long-chain saturated fatty acids. In some cancer cell lines, this protein has been found to be fused with estrogen receptor-alpha (ER-alpha), in which the N-terminus of FAS is fused in-frame with the C-terminus of ER-alpha. [provided by RefSeq]

Note: This product is for in vitro research use only