

ATP7B Antibody

Catalog No: #43445

Orders: order@signalwayantibody.comSupport: tech@signalwayantibody.com

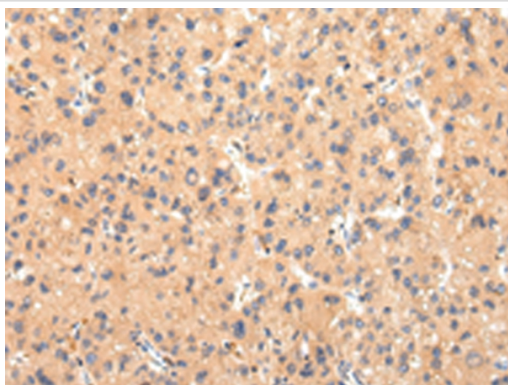
Description

Product Name	ATP7B Antibody
Host Species	Rabbit
Clonality	Polyclonal
Purification	Antigen affinity purification.
Applications	IHC
Species Reactivity	Hu
Specificity	The antibody detects endogenous levels of total ATP7B protein.
Immunogen Description	Synthetic peptide of human ATP7B
Target Name	ATP7B
Other Names	WD; PWD; WC1; WND
Accession No.	Swiss-Prot#: P35670 Gene ID: 540
Uniprot	P35670
GeneID	540;
Concentration	1.4mg/ml
Formulation	Rabbit IgG in pH7.4 PBS, 0.05% NaN ₃ , 40% Glycerol.
Storage	Store at -20°C

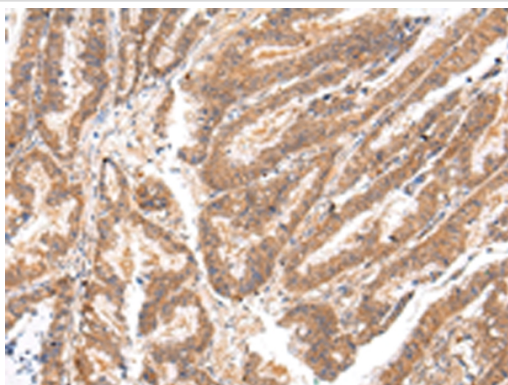
Application Details

Immunohistochemistry: 1:20-1:100

Images



Immunohistochemical analysis of paraffin-embedded Human liver cancer tissue using #43445 at dilution 1/20.



Immunohistochemical analysis of paraffin-embedded Human esophagus cancer tissue using #43445 at dilution 1/20.

Background

This gene is a member of the P-type cation transport ATPase family and encodes a protein with several membrane-spanning domains, an ATPase consensus sequence, a hinge domain, a phosphorylation site, and at least 2 putative copper-binding sites. This protein functions as a monomer, exporting copper out of the cells, such as the efflux of hepatic copper into the bile. Alternate transcriptional splice variants, encoding different isoforms with distinct cellular localizations, have been characterized. Mutations in this gene have been associated with Wilson disease (WD).?

Note: This product is for in vitro research use only