

## E2F1 Antibody

Catalog No: #43456

Orders: [order@signalwayantibody.com](mailto:order@signalwayantibody.com)Support: [tech@signalwayantibody.com](mailto:tech@signalwayantibody.com)

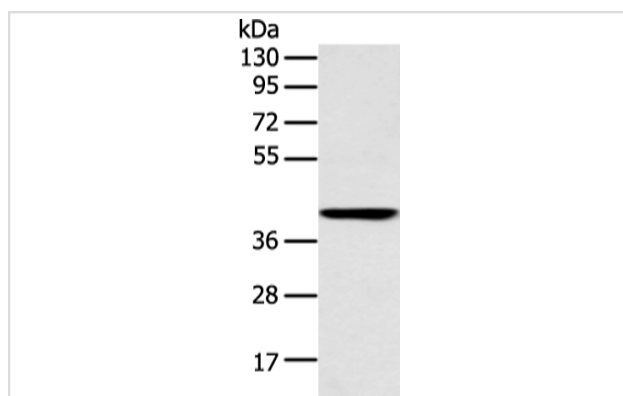
## Description

Product Name	E2F1 Antibody
Host Species	Rabbit
Clonality	Polyclonal
Purification	Antigen affinity purification.
Applications	WB
Species Reactivity	Hu Ms Rt
Specificity	The antibody detects endogenous levels of total E2F1 protein.
Immunogen Type	peptide
Immunogen Description	Synthetic peptide of human E2F1
Target Name	E2F1
Other Names	RBP3; E2F-1; RBAP1; RBBP3
Accession No.	Swiss-Prot#: Q01094Gene ID: 1869
Uniprot	Q01094
GeneID	1869;
Calculated MW	47kd
Concentration	1.1mg/ml
Formulation	Rabbit IgG in pH7.4 PBS, 0.05% NaN <sub>3</sub> , 40% Glycerol.
Storage	Store at -20°C

## Application Details

Western blotting: 1:200-1:1000

## Images



Gel: 6%SDS-PAGE  
Lysate: 40 µg  
Lane: Human fetal muscle tissue  
Primary antibody: 1/250 dilution  
Secondary antibody: Goat anti rabbit IgG at 1/8000 dilution  
Exposure time: 5 minutes

## Background

The protein encoded by this gene is a member of the E2F family of transcription factors. The E2F family plays a crucial role in the control of cell cycle and action of tumor suppressor proteins and is also a target of the transforming proteins of small DNA tumor viruses. The E2F proteins contain several

evolutionally conserved domains found in most members of the family. These domains include a DNA binding domain, a dimerization domain which determines interaction with the differentiation regulated transcription factor proteins (DP), a transactivation domain enriched in acidic amino acids, and a tumor suppressor protein association domain which is embedded within the transactivation domain.

---

Note: This product is for in vitro research use only