

## SMARCA1 Antibody

Catalog No: #43471

Orders: [order@signalwayantibody.com](mailto:order@signalwayantibody.com)Support: [tech@signalwayantibody.com](mailto:tech@signalwayantibody.com)

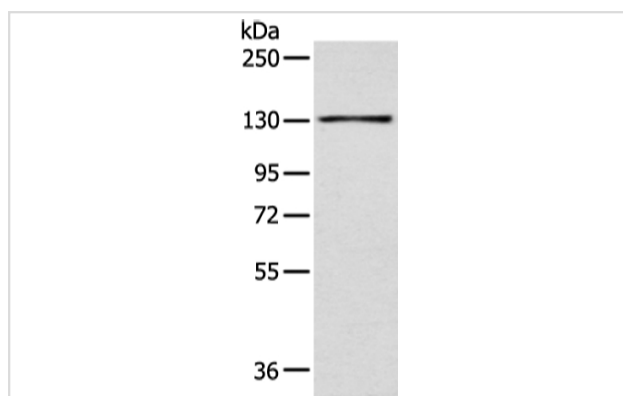
## Description

Product Name	SMARCA1 Antibody
Host Species	Rabbit
Clonality	Polyclonal
Purification	Antigen affinity purification.
Applications	WB
Species Reactivity	Hu
Specificity	The antibody detects endogenous levels of total SMARCA1 protein.
Immunogen Type	peptide
Immunogen Description	Synthetic peptide of human SMARCA1
Target Name	SMARCA1
Other Names	SWI; ISWI; SWI2; SNF2L; SNF2L1; SNF2LB; SNF2LT; NURF140
Accession No.	Swiss-Prot#: P28370Gene ID: 6594
Uniprot	P28370
GeneID	6594;
Calculated MW	123kd
Concentration	1.9mg/ml
Formulation	Rabbit IgG in pH7.4 PBS, 0.05% NaN <sub>3</sub> , 40% Glycerol.
Storage	Store at -20°C

## Application Details

Western blotting: 1:500-1:2000

## Images



Gel: 6%SDS-PAGE  
Lysate: 40 µg  
Lane: 293T cell  
Primary antibody: 1/450 dilution  
Secondary antibody: Goat anti rabbit IgG at 1/8000 dilution  
Exposure time: 2 minutes

## Background

This gene encodes a member of the SWI/SNF family of proteins. The encoded protein is an ATPase which is expressed in diverse tissues and contributes to the chromatin remodeling complex that is involved in transcription. The protein may also play a role in DNA damage, growth inhibition

and apoptosis of cancer cells. Alternative splicing results in multiple transcript variants.

---

Note: This product is for in vitro research use only