

Slc30A8 Antibody

Catalog No: #26049

Orders: order@signalwayantibody.comSupport: tech@signalwayantibody.com

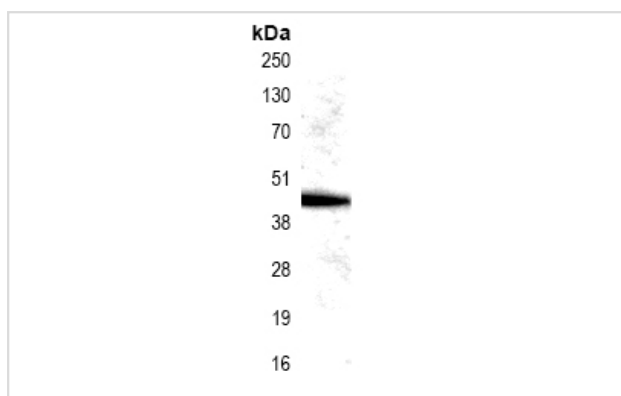
Description

Product Name	Slc30A8 Antibody
Host Species	Rabbit
Purification	Antibodies were produced by immunizing rabbits with synthetic peptide and KLH conjugates. Antibodies were purified by affinity-chromatography using epitope-specific peptide.
Applications	WB
Species Reactivity	Hu
Specificity	The antibody detects endogenous level of total Slc30A8 protein.
Immunogen Type	Peptide-KLH
Immunogen Description	KLH-conjugated synthetic peptide
Other Names	Zinc transporter 8; ZnT-8; ZNT8
Accession No.	Swiss-Prot#: Q8IWU4NCBI Gene ID: 169026NCBI Protein#: NP_776250.2
Uniprot	Q8IWU4
GeneID	169026;
Calculated MW	41kd
Concentration	1.0mg/mL
Formulation	Supplied at 1.0mg/mL in phosphate buffered saline (without Mg ²⁺ and Ca ²⁺), pH 7.4, 150mM NaCl, 0.02% sodium azide and 50% glycerol.
Storage	Store at -20°C

Application Details

Western blotting: 1:500~1:1000

Images



Western blot analysis of extracts from K562 cells using Slc30A8 Antibody #26049.

Background

Facilitates the accumulation of zinc from the cytoplasm into intracellular vesicles, being a zinc-efflux transporter. May be a major component for providing zinc to insulin maturation and/or storage processes in insulin-secreting pancreatic beta-cells.

Chimienti F., Devergnas S., Favier A., Seve M. *Diabetes* 53:2330-2337(2004)

Bechtel S., Rosenfelder H., Duda A., Schmidt C.P., Ernst U., Wellenreuther R., Mehrle A., Schuster C., Bahr A., Bloecker H., Heubner D., Hoerlein A., Michel G., Wedler H., Koehrer K., Ottenwaelder B., Poustka A., Wiemann S., Schupp I. *BMC Genomics* 8:399-399(2007)

Note: This product is for in vitro research use only