

# KHK Isoform A Antibody

Catalog No: #21708



Package Size: #21708-1 50ul #21708-2 100ul

Orders: [order@signalwayantibody.com](mailto:order@signalwayantibody.com)  
Support: [tech@signalwayantibody.com](mailto:tech@signalwayantibody.com)

## Description

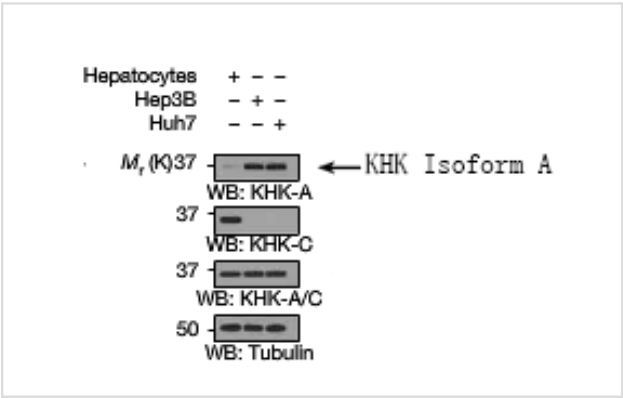
Product Name	KHK Isoform A Antibody
Host Species	Rabbit
Clonality	Polyclonal
Purification	Antibodies were produced by immunizing rabbits with synthetic peptide and KLH conjugates. Antibodies were purified by affinity-chromatography using epitope-specific peptide.
Applications	WB IHC
Species Reactivity	Hu
Specificity	The antibody detects endogenous level of total KHK Isoform A protein.
Immunogen Type	Peptide-KLH
Immunogen Description	Peptide sequence around aa.90~95 (T-T-G-S-V) derived from Human KHK Isoform A .
Other Names	Ketohexokinase; Hepatic fructokinase; KHK
Accession No.	Swiss-Prot#: P50053-2NCBI Gene ID: 3795NCBI Protein#: NP_000212.1
Uniprot	P50053
GeneID	3795;
Calculated MW	33kd
Concentration	1.0mg/mL
Formulation	Supplied at 1.0mg/mL in phosphate buffered saline (without Mg2+ and Ca2+), pH 7.4, 150mM NaCl, 0.02% sodium azide and 50% glycerol.
Storage	Store at -20°C

## Application Details

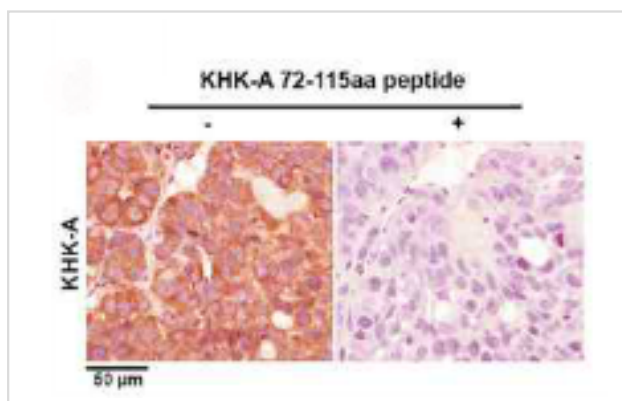
Western blotting: 1:500-1000

Immunohistochemistry: 1:50~1:100

## Images



Western blot analysis of extracts from Hepatocyte, Hep3B and Huh7 cells using KHK Isoform A Antibody #21708. (Reference: Nat Cell Biol. 2016 May;18(5):561-71.)



Immunohistochemical analysis of tumors derived from Huh-7 cells using KHK Isoform A Antibody #21708 (left) or the same antibody preincubated with blocking peptide (right). (Reference: Nat Cell Biol. 2016 May;18(5):561-71.)

## Background

Catalyzes the phosphorylation of the ketose sugar fructose to fructose-1-phosphate.

Bonthron D.T., Brady N., Donaldson I.A., Steinmann B. Hum. Mol. Genet. 3:1627-1631(1994)

Note: This product is for in vitro research use only