

IL20 Antibody

Catalog No: #43508

Orders: order@signalwayantibody.comSupport: tech@signalwayantibody.com

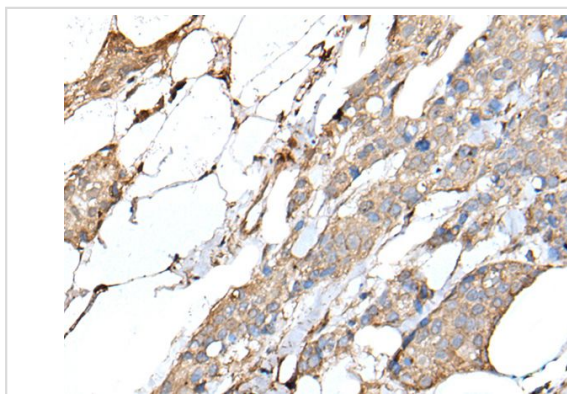
Description

| | |
|-----------------------|---|
| Product Name | IL20 Antibody |
| Host Species | Rabbit |
| Clonality | Polyclonal |
| Purification | Antigen affinity purification |
| Applications | IHC |
| Species Reactivity | Hu |
| Specificity | The antibody detects endogenous levels of total IL20 protein. |
| Immunogen Type | protein |
| Immunogen Description | Full length fusion protein |
| Target Name | IL20 |
| Other Names | IL-20; IL10D; ZCYTO10 |
| Accession No. | Swiss-Prot#: Q9NYY1NCBI Gene ID: 50604 |
| Uniprot | Q9NYY1 |
| GeneID | 50604; |
| Concentration | 0.9mg/ml |
| Formulation | Rabbit IgG in pH7.4 PBS, 0.05% NaN ₃ , 40% Glycerol. |
| Storage | Store at -20°C |

Application Details

Immunohistochemistry: 1: 20-100

Images



The image on the left is immunohistochemistry of paraffin-embedded Human breast cancer tissue using IL20 Antibody at dilution 1/35, on the right is treated with fusion protein. (Original magnification: x200)

Background

The protein encoded by this gene is a cytokine structurally related to interleukin 10 (IL10). This cytokine has been shown to transduce its signal through signal transducer and activator of transcription 3 (STAT3) in keratinocytes. A specific receptor for this cytokine is found to be expressed in skin and upregulated dramatically in psoriatic skin, suggesting a role for this protein in epidermal function and psoriasis.

Note: This product is for in vitro research use only