

## ELF1 Antibody

Catalog No: #43514

Orders: [order@signalwayantibody.com](mailto:order@signalwayantibody.com)Support: [tech@signalwayantibody.com](mailto:tech@signalwayantibody.com)

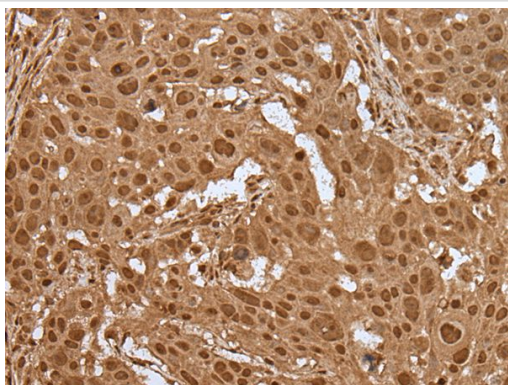
## Description

Product Name	ELF1 Antibody
Host Species	Rabbit
Clonality	Polyclonal
Purification	Antigen affinity purification
Applications	IHC
Species Reactivity	Hu
Specificity	The antibody detects endogenous levels of total ELF1 protein.
Immunogen Type	protein
Immunogen Description	Fusion protein of human ELF1
Target Name	ELF1
Accession No.	Swiss-Prot#: P32519NCBI Gene ID: 1997
Uniprot	P32519
GeneID	1997;
Concentration	0.7mg/ml
Formulation	Rabbit IgG in pH7.4 PBS, 0.05% NaN <sub>3</sub> , 40% Glycerol.
Storage	Store at -20°C

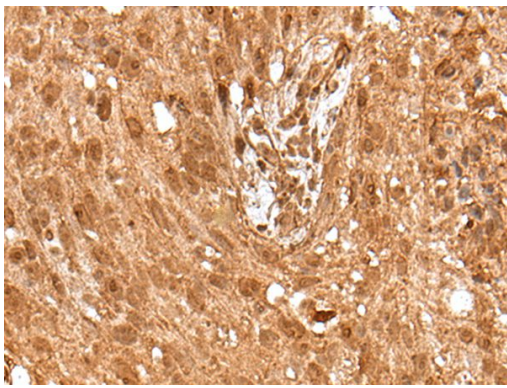
## Application Details

Immunohistochemistry: 1: 20-100

## Images



The image on the left is immunohistochemistry of paraffin-embedded Human esophagus cancer tissue using ELF1 Antibody at dilution 1/30, on the right is treated with fusion protein. (Original magnification: x200)



The image on the left is immunohistochemistry of paraffin-embedded Human lung cancer tissue using ELF1 Antibody at dilution 1/30, on the right is treated with fusion protein. (Original magnification: x200)

## Background

This gene encodes an E26 transformation-specific related transcription factor. The encoded protein is primarily expressed in lymphoid cells and acts as both an enhancer and a repressor to regulate transcription of various genes. Alternative splicing results in multiple transcript variants.?

Note: This product is for in vitro research use only