

LDHC Antibody

Catalog No: #43519

Orders: order@signalwayantibody.comSupport: tech@signalwayantibody.com

Description

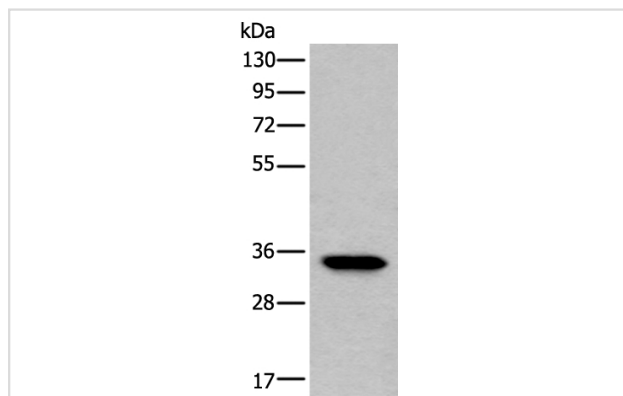
Product Name	LDHC Antibody
Host Species	Rabbit
Clonality	Polyclonal
Purification	Antigen affinity purification
Applications	IHC WB
Species Reactivity	Hu
Specificity	The antibody detects endogenous levels of total LDHC protein.
Immunogen Type	protein
Immunogen Description	Fusion protein of human LDHC
Target Name	LDHC
Other Names	CT32; LDH3; LDHX
Accession No.	Swiss-Prot#: P07864NCBI Gene ID: 3948
Uniprot	P07864
GeneID	3948;
Calculated MW	36kd
Concentration	0.8mg/ml
Formulation	Rabbit IgG in pH7.4 PBS, 0.05% NaN ₃ , 40% Glycerol.
Storage	Store at -20°C

Application Details

Western blotting: 1:200-1000

Immunohistochemistry: 1: 20-100

Images



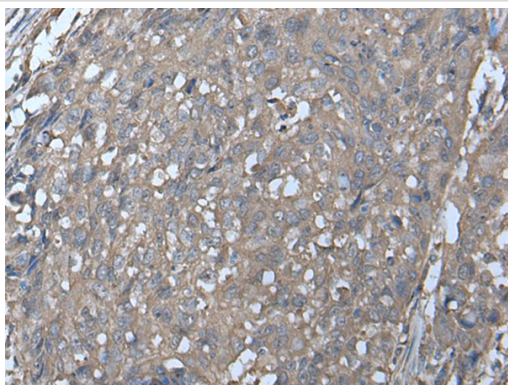
Gel: 8%SDS-PAGE

Lysate: 40 µg, Lane: Human testis tissue lysate,

Primary antibody:LDHC antibody at dilution 1/300,

Secondary antibody: Goat anti rabbit IgG at 1/8000 dilution,

Exposure time: 3 seconds



The image on the left is immunohistochemistry of paraffin-embedded Human lung cancer tissue using LDHC Antibody at dilution 1/30, on the right is treated with fusion protein. (Original magnification: x200)

Background

Lactate dehydrogenase C catalyzes the conversion of L-lactate and NAD to pyruvate and NADH in the final step of anaerobic glycolysis. LDHC is testis-specific and belongs to the lactate dehydrogenase family. Two transcript variants have been detected which differ in the 5' untranslated region.?

Note: This product is for in vitro research use only