

## LDHD Antibody

Catalog No: #43520

Orders: [order@signalwayantibody.com](mailto:order@signalwayantibody.com)Support: [tech@signalwayantibody.com](mailto:tech@signalwayantibody.com)

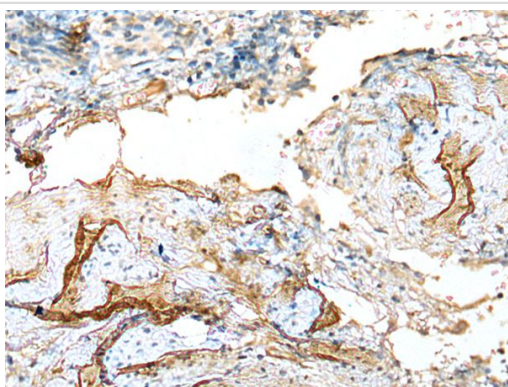
## Description

Product Name	LDHD Antibody
Host Species	Rabbit
Clonality	Polyclonal
Purification	Antigen affinity purification
Applications	IHC
Species Reactivity	Hu
Specificity	The antibody detects endogenous levels of total LDHD protein.
Immunogen Type	protein
Immunogen Description	Fusion protein of human LDHD
Target Name	LDHD
Other Names	DLD
Accession No.	Swiss-Prot#: Q86WU2NCBI Gene ID: 197257
Uniprot	Q86WU2
GeneID	197257;
Concentration	2.9mg/ml
Formulation	Rabbit IgG in pH7.4 PBS, 0.05% NaN <sub>3</sub> , 40% Glycerol.
Storage	Store at -20°C

## Application Details

Immunohistochemistry: 1: 100-300

## Images



The image on the left is immunohistochemistry of paraffin-embedded Human cervical cancer tissue using LDHD Antibody at dilution 1/100, on the right is treated with fusion protein. (Original magnification: x200)

## Background

The protein encoded by this gene belongs to the D-isomer specific 2-hydroxyacid dehydrogenase family. The similar protein in yeast has both D-lactate and D-glycerate dehydrogenase activities. Alternative splicing occurs at this locus and two transcript variants encoding distinct isoforms have been identified.

---

Note: This product is for in vitro research use only