

RASA1 Antibody

Catalog No: #43529

Orders: order@signalwayantibody.comSupport: tech@signalwayantibody.com

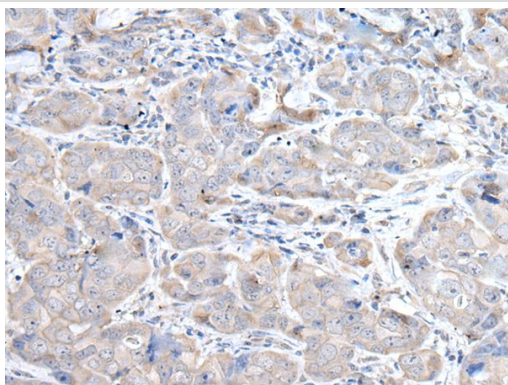
Description

Product Name	RASA1 Antibody
Host Species	Rabbit
Clonality	Polyclonal
Purification	Antigen affinity purification
Applications	IHC
Species Reactivity	Hu
Specificity	The antibody detects endogenous levels of total RASA1 protein.
Immunogen Type	protein
Immunogen Description	Fusion protein of human RASA1
Target Name	RASA1
Other Names	GAP; PKWS; RASA; CMAVM; CM-AVM; RASGAP; p120GAP; p120RASGAP
Accession No.	Swiss-Prot#: P20936NCBI Gene ID: 5921
Uniprot	P20936
GeneID	5921;
Concentration	1.1mg/ml
Formulation	Rabbit IgG in pH7.4 PBS, 0.05% NaN ₃ , 40% Glycerol.
Storage	Store at -20°C

Application Details

Immunohistochemistry: 1: 30-150

Images



The image on the left is immunohistochemistry of paraffin-embedded Human breast cancer tissue using RASA1 Antibody at dilution 1/45, on the right is treated with fusion protein. (Original magnification: x200)

Background

The protein encoded by this gene is located in the cytoplasm and is part of the GAP1 family of GTPase-activating proteins. The gene product stimulates the GTPase activity of normal RAS p21 but not its oncogenic counterpart. Acting as a suppressor of RAS function, the protein enhances the weak intrinsic GTPase activity of RAS proteins resulting in the inactive GDP-bound form of RAS, thereby allowing control of cellular proliferation and differentiation. Mutations leading to changes in the binding sites of either protein are associated with basal cell carcinomas. Mutations also have been

associated with hereditary capillary malformations (CM) with or without arteriovenous malformations (AVM) and Parkes Weber syndrome. Alternative splicing results in two isoforms where the shorter isoform, lacking the N-terminal hydrophobic region but retaining the same activity, appears to be abundantly expressed in placental but not adult tissues.

Note: This product is for in vitro research use only