

REG1A Antibody

Catalog No: #43531

Orders: order@signalwayantibody.comSupport: tech@signalwayantibody.com

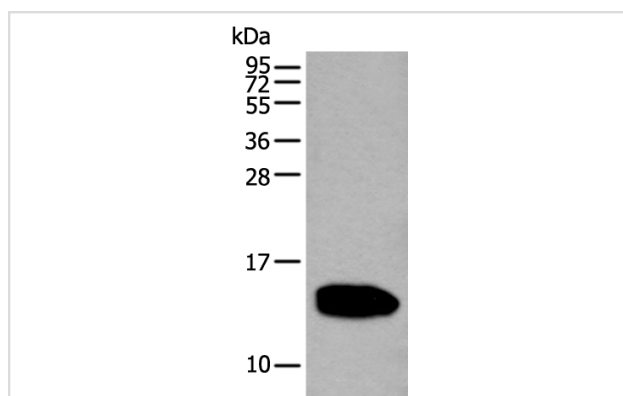
Description

Product Name	REG1A Antibody
Host Species	Rabbit
Clonality	Polyclonal
Purification	Antigen affinity purification
Applications	WB
Species Reactivity	Hu
Specificity	The antibody detects endogenous levels of total REG1A protein.
Immunogen Type	protein
Immunogen Description	Fusion protein of human REG1A
Target Name	REG1A
Other Names	P19; PSP; PTP; REG; ICRF; PSPS; PSPS1
Accession No.	Swiss-Prot#: P05451NCBI Gene ID: 5967
Uniprot	P05451
GeneID	5967;
Calculated MW	19kd
Concentration	0.9mg/ml
Formulation	Rabbit IgG in pH7.4 PBS, 0.05% NaN ₃ , 40% Glycerol.
Storage	Store at -20°C

Application Details

Western blotting: 1:200-1000

Images



Gel: 12%SDS-PAGE

Lysate: 40 µg, Lane: Human pancreas tissue lysate,

Primary antibody:REG1A antibody at dilution 1/350,

Secondary antibody: Goat anti rabbit IgG at 1/8000 dilution,

Exposure time: 3 seconds

Background

This gene is a type I subclass member of the Reg gene family. The Reg gene family is a multigene family grouped into four subclasses, types I, II, III and IV, based on the primary structures of the encoded proteins. This gene encodes a protein that is secreted by the exocrine pancreas. It is

associated with islet cell regeneration and diabetogenesis and may be involved in pancreatic lithogenesis. Reg family members REG1B, REGL, PAP and this gene are tandemly clustered on chromosome 2p12 and may have arisen from the same ancestral gene by gene duplication.

Note: This product is for in vitro research use only