

SAA4 Antibody

Catalog No: #43534



Orders: [order@signalwayantibody.com](mailto:order@signalwayantibody.com)  
Support: [tech@signalwayantibody.com](mailto:tech@signalwayantibody.com)

Description

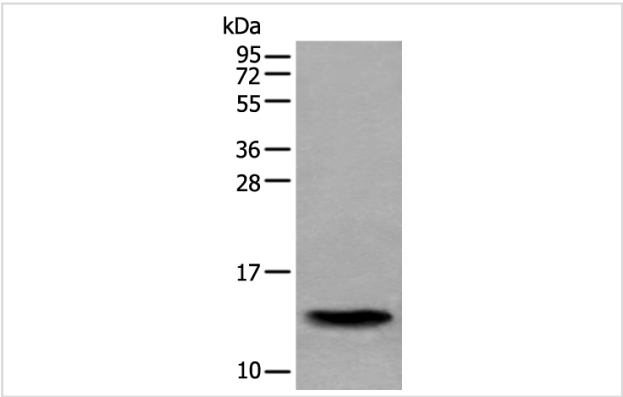
Product Name	SAA4 Antibody
Host Species	Rabbit
Clonality	Polyclonal
Purification	Antigen affinity purification
Applications	IHC WB
Species Reactivity	Hu
Specificity	The antibody detects endogenous levels of total SAA4 protein.
Immunogen Type	protein
Immunogen Description	Full length fusion protein
Target Name	SAA4
Other Names	CSAA; C-SAA
Accession No.	Swiss-Prot#: P35542NCBI Gene ID: 6291
Uniprot	P35542
GeneID	6291;
Calculated MW	15kd
Concentration	0.8mg/ml
Formulation	Rabbit IgG in pH7.4 PBS, 0.05% NaN3, 40% Glycerol.
Storage	Store at -20°C

Application Details

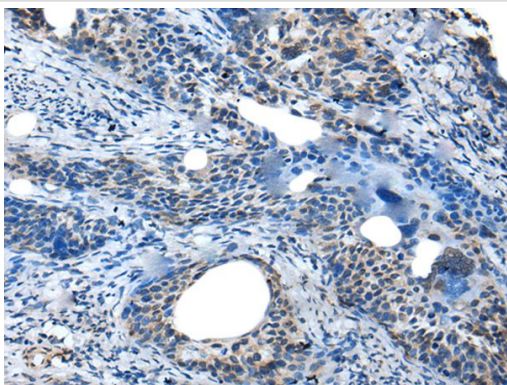
Western blotting: 1:200-1000

Immunohistochemistry: 1: 20-100

Images



Gel: 12%SDS-PAGE  
Lysate: 40 µg, Lane: Human normal stomach tissue lysate,  
Primary antibody:SAA4 antibody at dilution 1/350,  
Secondary antibody: Goat anti rabbit IgG at 1/8000 dilution,  
Exposure time: 5 minutes



The image on the left is immunohistochemistry of paraffin-embedded Human cervical cancer tissue using SAA4 Antibody at dilution 1/35, on the right is treated with fusion protein. (Original magnification: x200)

## Background

SAA4 is a member of the SAA family. SAA proteins are family of apolipoproteins of high density lipoprotein (HDL). They can be separated into two distinct groups. First group (SAA1, SAA2, and SAA3) consists of acute phase reactant whose expression level increase in the blood in a response to trauma, infection, inflammation, and neoplasia. These acute phase SAAs associates with HDL during inflammation and remodel the HDL particle by displacing Apo-A1. The second distinct group consists of SAA4 and SAA5 which exist as the minor apolipoproteins on HDL, but this group of SAA constitutes more than 90% of all the SAA during homeostasis, and it is thought to play a role in the normal functioning of the HDL particle. SAA4 is a constitutively expressed protein which expressed only in humans and mice. It is connected almost completely with lipoproteins of the high density range. The physiological function of SAA4 is unknown, and its serum concentration has no association with those of other major apolipoproteins.

Note: This product is for in vitro research use only