

## HELLS Antibody

Catalog No: #43539

Orders: [order@signalwayantibody.com](mailto:order@signalwayantibody.com)Support: [tech@signalwayantibody.com](mailto:tech@signalwayantibody.com)

## Description

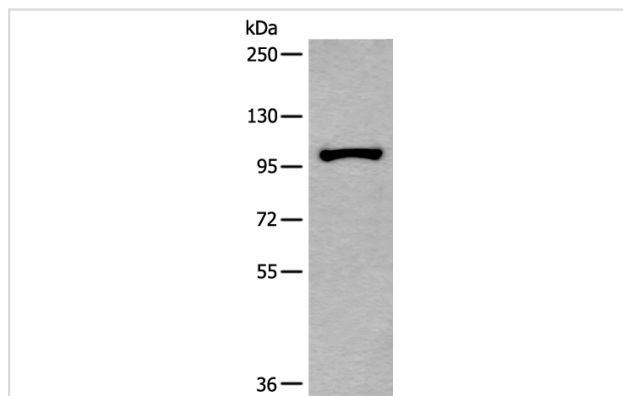
|                       |   |
|-----------------------|---|
| Product Name          | HELLS Antibody  |
| Host Species          | Rabbit  |
| Clonality             | Polyclonal  |
| Purification          | Antigen affinity purification                                   |
| Applications          | IHC WB  |
| Species Reactivity    | Hu  |
| Specificity           | The antibody detects endogenous levels of total HELLS protein.  |
| Immunogen Type        | protein   |
| Immunogen Description | Fusion protein of human HELLS                                   |
| Target Name           | HELLS   |
| Other Names           | LSH; PASG; SMARCA6; Nbla10143                                   |
| Accession No.         | Swiss-Prot#: Q9NRZ9NCBI Gene ID: 3070                           |
| Uniprot               | Q9NRZ9  |
| GeneID                | 3070;   |
| Calculated MW         | 97kd  |
| Concentration         | 1.6mg/ml  |
| Formulation           | Rabbit IgG in pH7.4 PBS, 0.05% NaN <sub>3</sub> , 40% Glycerol. |
| Storage               | Store at -20°C  |

## Application Details

Western blotting: 1:500-2000

Immunohistochemistry: 1: 100-250

## Images



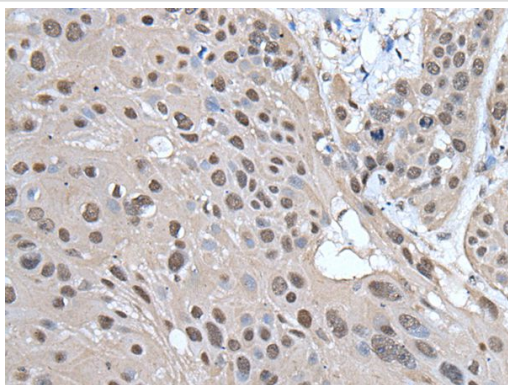
Gel: 6%SDS-PAGE

Lysate: 40 µg, Lane: HEPG2 cell lysate,

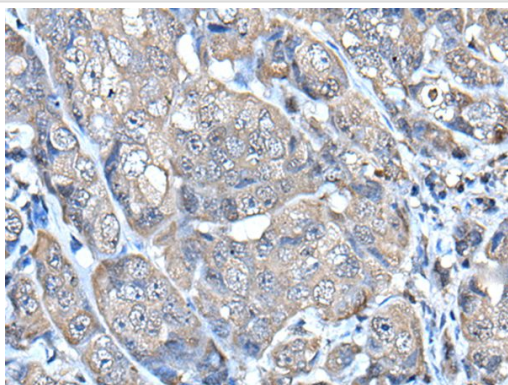
Primary antibody:HELLS antibody at dilution 1/800,

Secondary antibody: Goat anti rabbit IgG at 1/8000 dilution,

Exposure time: 10 seconds



The image on the left is immunohistochemistry of paraffin-embedded Human esophagus cancer tissue using HELLS Antibody at dilution 1/100, on the right is treated with fusion protein. (Original magnification: x200)



The image on the left is immunohistochemistry of paraffin-embedded Human breast cancer tissue using HELLS Antibody at dilution 1/100, on the right is treated with fusion protein. (Original magnification: x200)

## Background

This gene encodes a lymphoid-specific helicase. Other helicases function in processes involving DNA strand separation, including replication, repair, recombination, and transcription. This protein is thought to be involved with cellular proliferation and may play a role in leukemogenesis. Alternatively spliced transcript variants encoding different isoforms have been identified.

Note: This product is for in vitro research use only